

***To boldly go where no
cat has gone before !***



(Click above to display help topics)

WizCat/PRO on the Web !
see <http://www.xs4all.nl/~wincat/>



Using WizCat/PRO



Quick Overview



Volume List window



Folder List window



File List window



Search Files window



WizCat's Windows Explained



Frequently Asked Questions



Registration



Registering WizCat/PRO



Entering your Registration Number



License and Trial Period



Disclaimer of Warranty



General Information



WizCat/PRO Features



Reviews



Hints and Tips



Acknowledgments



About the Author



Your Comments...



Installing WizCat/PRO



System Requirements



Packing List



Installing WizCat/PRO



Uninstalling WizCat/PRO



Version History



WizCat/PRO 4.2



WinCat/PRO 4.1



WinCat/PRO 4.0



WinCat/PRO 3.4



Bugs Fixed



Distribution and Vendor Information



Where To Get WizCat/PRO



Distributing WizCat/PRO



Vendor Information



Utility Programs



WOODLE - Printing Disklabels



WizCat/unZIP - Unpacking Archives



WizCat/DIZ - Reading DIZ Files



WizCat/MC - Searching Multiple Catalogs



Accessories and Titbits



WizCat/MC

WizCat/MC is a utility which allows you to search for files in multiple WizCat/PRO catalogs, without having to read those catalogs one by one with WizCat/PRO.

It's a free add-on for (and only works in combination with) the WizCat/PRO 4.2 Disk and CDROM Catalog program.

How to install and use WizCat/MC

WIZCATMC.EXE needs file WIZCATBT.DLL ; this DLL library is distributed with the WizCat/PRO 4.2 package.

The installation program installs file WIZCATMC.EXE in the same folder as WIZCAT.EXE

Before running WizCat/MC, you must first specify the folder which contains your catalog files on WizCat/PRO's 'Configure' window like this :

1. start WizCat/PRO (so NOT WizCat/MC !)
2. click the 'Options' menu and select option 'Configure WizCat'.
3. click the 'Folders' tab
4. specify the folder which contains your catalog files on the second line marked 'folder initially shown on open catalog window'.

Using WizCat/MC is fairly simple : enter the search-criteria (e.g. filename, description etc.) the same way you do on WizCat/PRO's 'Search Files' window, select one or more catalogs and hit the enter key.

After scanning the selected catalogs, WizCat/MC will display the File List window which works almost the same as WizCat/PRO's File List window.



1. WizCat/MC is slower than WizCat/PRO, because unlike WizCat/PRO WizCat/MC doesn't keep a catalog in memory after it has been read from the disk. Therefore WizCat/MC has to read the selected catalogs from disk every time you perform a file-search. Activate Microsoft's SMARTDRIVE to speed-up things.

2. WizCat/MC uses display-options and preferences defined with WizCat/PRO ; you cannot alter those with WizCat/MC, but you'll have to run WizCat/PRO in order to change them (by using the 'Configure' window).

3. WizCat/MC cannot search for files in archives !



WizCat/unZIP

WizCat/UnZIP is a utility which unpacks (extracts) ZIP and ARJ archive files. It's a free add-on for (and only works in combination with) the WizCat/PRO 4.2 Disk and CDROM Catalog program.

Note that WizCat/UnZIP is not intended to be(come) the ultimate unzip tool ; all it does (or tries to do) is to unpack all or selected files from a ZIP or ARJ archive into a specified folder. Yet its simple approach makes it an easy-to-use and fast tool in combination with WizCat/PRO.

If you need more features or facilities, you should use a specialized unzip tool, for instance WinZip (copyright Nico Mak Computing, Inc.).

How to install and use WizCat/UnZIP

WIZCATUZ.EXE needs file WIZCATBT.DLL ; this DLL library is distributed with the WizCat/PRO 4.2 package.

The installation program installs files WIZCATUZ.EXE and WIZCATUZ.WAV in the same folder as WIZCAT.EXE

To use WIZCATUZ, define it as an application on the 'Work With' window.

After you have done this, double-clicking the WizCat/Unzip icon on WizCat's 'Work With' window will run the UnZIP utility.

On WizCat/UnZIP's window you can see the contents of the selected file, its uncompressed size, and the folder into which it will be unpacked.

Click the OK button to unpack all (or selected) files from the archive, or the Cancel button to end WizCat/UnZIP.

If you click the OK button, this button will disappear and the unpacking will start ; the zipper will gradually open.

You can abort this process by clicking the Cancel button.



WizCat/DIZ

WizCat/DIZ is distributed as a free add-on for (and only works in combination with) the WizCat/PRO 4.2 Disk and CDROM Catalog program.

In ARJ and ZIP archive files you usually find a file called FILE_ID.DIZ. These DIZ files are used (as a defacto standard) to describe an archive's contents or the function of a particular program.

WizCat/DIZ is a utility which scans a disk for ARJ and ZIP archive files, and extracts all FILE_ID.DIZ file descriptions from those files. These descriptions are copied to a textfile called C:\WCIMPORT.TXT

After you have cataloged a disk or CD with WizCat/PRO, you can use this WCIMPORT.TXT file as input for WizCat/PRO's 'Import' function ; this makes it easy to document the files in your catalog.

How to install and use WizCat/DIZ

WIZCATDZ.EXE needs file WIZCATBT.DLL ; this DLL library is distributed with the WizCat/PRO 4.2 package.
The installation program installs file WIZCATDZ.EXE in the same folder as WIZCAT.EXE, and defines WIZCATDZ.EXE to the Program Manager.

When you start WizCat/DIZ, you'll see a small listbox which shows all drives available on your system.
Select the drive/disk which you want to scan for DIZ files ; make sure you first insert a floppydisk or CD-ROM if applicable.

When you click the OK button, WizCat/DIZ will start scanning the disk. Counters show you how many archive-files have been scanned, and how many of them contained a FILE_ID.DIZ file. You can abort this process by clicking the Cancel button.

After a while (depending on how many archives had to be scanned) WizCat/DIZ will notify you that the WCIMPORT.TXT file has been created.
You can then start WizCat/PRO and open the catalog that contains the disk/CD you've just scanned.

Then click the Utilities menu and select the Import function.
On the Import window select file C:\WCIMPORT.TXT as input and click OK. WizCat will now copy the descriptions from file WCIMPORT.TXT to its catalog.



Quick Overview

This Quick Overview tells you briefly how WizCat/PRO works and what it can do for you :

What is it

WizCat/PRO is today's most advanced cataloging system.

It helps you keep track of your growing collection of files on floppydisks, opticals, harddisks and especially CDROMs. Its userfriendly displays and splendid graphics make WizCat/PRO a joy to work with ; its high speed, high capacity and numerous useful features make it an indispensable tool for the power user.

What does it do

With WizCat/PRO you can create a database (or catalog) of all the files that hide on your disks. Then, if you need a specific file, you can use WizCat to search the database and quickly find that file among all those thousands other files you have.

But suppose you need a font viewer ; there are lots of those on your CDs, but how do you find them if you don't know that they are called FV110.ZIP or WFL30.ZIP ?

That's why WizCat/PRO also tries to document the files ; when cataloging a disk, it automatically reads `descript.ion` and `files.bbs` files which contain descriptions of those files. In addition, you can import filedescriptions from other sources, for instance indexlistings on CDROMs or BBS AllFiles listings. With the utility-program WizCat/DIZ you can even extract all `FILE_ID.DIZ` filedescriptions from ZIP and ARJ archives.

WizCat/PRO can handle filedescriptions of up to 500 characters.

Now finding that font viewer is easy ; all you have to do is to search for 'font', and WizCat/PRO will show all applicable files instantly.

But WizCat/PRO even helps you when you don't know what you're looking for...

Suppose you buy a new CD ; how on earth can you see what's on it ?

The Windows' FileManager leaves you out in the cold, as it would take you ages to browse through thousands of folders and files with cryptic names.

Again WizCat/PRO comes to the rescue : it can instantly show you all files by 'function class', e.g. programs, graphics, archives, etc. Or you can browse through the folder list, or show all files created in 1995, etc.

So, no matter how vast the amount of data on your disks : WizCat/PRO provides the guided tour. In four languages...

After having found a file, you probably want to do something with it.

With the 'Work with File' function you can start any Windows program to work with that file.


Or you can 'drag' the file to another application.

With the utility-program WizCat/unZIP you can even unpack ZIP and ARJ archive files !


The short tutorial below explains WizCat's main windows and functions, enabling you to use WizCat instantly. Click on every button or (green) underlined text to display the windows and additional information.

When you start WizCat you'll see the Volume List window, which shows all the disks in the catalog, and a few actions buttons.



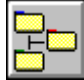
To [add a disk to the catalog](#), click the  button. WizCat will then display the Drive Select window, where you can select which disk (from which drive) you want to catalog.




After cataloging a disk, use the  button to display the Volume Information window, where you can [enter a description](#) for this disk, and optionally assign a group-, location- and/or owner-id to it.

You can [display all folders](#) on a disk by selecting it on the Volume List window (just click once




on it) and clicking the  button. On the Folder List window that will be displayed you can select a specific folder and display all files in it.



Click the  button to [display all files](#) that are on the selected volume. You can also do this by double-clicking a volume entry.



When you want to [search for files](#), click the  button to display the Search Files window, which enables you to search files by filename, extension, comment etc..



WizCat's Windows Explained

[Archive Contents](#)

[Catalog Disk](#)

[Change Volume Icon](#)

[Compare](#)

[Configure](#)

[Folder List](#)

[Drive Select](#)

[Export](#)

[File Information](#)

[File List](#)

[Import](#)

[Print Disklabels](#)

[Recatalog Disk](#)

[Register WizCat](#)

[Rename Volume](#)

[Search Files](#)

[Select Volume Group](#)

[Statistics](#)

[Volume Information](#)

[Volume ListWork with File](#)



Frequently Asked Questions

Q - Is it possible to catalog only 1 directory from my harddisk ?

A - WizCat catalogs an entire disk ; it doesn't have an option to catalog selected directories only.

However, by using the DOS SUBST command you can assign a drive-id to a specific directory, and you can then catalog that (virtual) drive with WizCat.

This is how to do it :

Enter this on the DOS command line : **SUBST K C:\MYDIR** (K is the drive-id you assign, C:\MYDIR the directory to be selected)

Now drive K will show on WizCat's Drive Select window ; if you catalog that drive, only the files in directory C:\MYDIR will be cataloged.

Q - Is it possible to merge two catalogs ?

A - WizCat doesn't have a built-in function to do that, but you can use the DOS COPY command to do it :

Example : to merge GRAPHIC.CAT and DISKS.CAT enter this on the DOS commandline :

copy graphic.cat /b + disks.cat /b merged.cat (/b means 'binary copy')

Now MERGED.CAT is the merged catalog.

Q - Does WizCat support Windows 95 long filenames ?

A - Yes ; see [About Windows 95 long filenames](#)

Q - When cataloging a disk, I get message 'Unable to create file C:\WIZCAT\ARCHIVES\Fxxxxxx.ACT'. How come ?

A - When cataloging a disk, WizCat scans the archive-files (like ARJ and ZIP) on the disk, in order to determine their contents. WizCat wants to save this information in a file named Fxxxxxxx.ACT, in the (default) C:\WIZCAT\ARCHIVES folder. If this folder doesn't exist then WizCat cannot create the file ; hence the message.

You must create the C:\WIZCAT\ARCHIVES folder to enable WizCat to catalog the contents of archive-files.

If you want WizCat to use another folder to store its ACT files, you must create that folder AND specify its name on the 'Configure' window as 'Archive contents folder'.

See also [Cataloging Archive Contents](#)

Q - When I print labels with WOODLE, they are either too wide or too long.

A - In order to use WOODLE, your printer must be able to print the same amount of Dots-Per-Inch (DPI) horizontally and vertically, eg. 300x300 or 180x180 DPI.

Some matrix-printers (like the Epson LX-8000) offer non-symmetric resolutions like 240x144 DPI ; when you print labels with this resolution they will have the wrong size : instead of 2.75" x 2.75" they will be printed $(240/240)*2.75" \times (240/144)*2.75" = 2.75" \times 4.58"$.

Q - The File List window's VIEW option has predefined classes like Programs, Archives etc.

Can I customize these or add my own ?

A - Yes. See [View](#)

Q - Can I customize which program to run when clicking the FileManager and TaskManager buttons on the Volume List window ?

A - Yes. See [File- and TaskManager](#)

Q - I have a disk cataloged which contains 10,000 files ; yet the File List window only shows 7,999.

A - Due to a limitation in Windows that's the maximum number of files the File List window can display at a time. But instead of scrolling through a huge list, why not use the 'Folder List' window to display files in each folder ? Or use the Statistics window to show all files by function class.

See also [Program Limitations](#)

Q - When using the Search Files window, I always get an empty File List window.

A - Suppose you want to search for a file named VBRUN100.DLL ; there are several ways to find it :

Filename : VB

Filename : 100

Filename : VB Extension : DLL

NEVER use DOS wildcard-characters ; if you enter VB* as filename, WizCat won't find anything.

See also [Search Files window](#)

Q - Can I let WizCat open a catalog immediately upon startup ?

A - Yes. See [Automatically Opening a Catalog](#)

Q - I made an error and entered 'Widows' instead of 'Windows' on the Volume Information's Group field. How can I delete that group ?

A - You don't have to. Next time you load the catalog group 'Widows' will be gone (as long as no volume is assigned to it).

Q - Is there an option to limit the files WizCat/PRO catalogs to for instance only *.ZIP and *.EXE files ?

This would keep the catalog smaller.

A - Sure, but that would be the same as making a dictionary with only those words you use TODAY. Of course that would make the dictionary smaller, but also very limited. So...

Q - Why doesn't WOODLE print the filenames on disklabels ?

A - If you print filenames on a label you would have to change the label every time you update the disk. Besides that, why bother reading all those labels to find a file if you can use WizCat to find it for you ?

Q - How come WizCat is so slow ?

A - That's about the same as asking "how come my Ferrari is so slow ?".

Normally a Ferrari isn't slow, unless you use it to tow a trailer loaded with 15 tons junk...

The same goes for WizCat :

WizCat/PRO is designed for top-speed execution, and in fact it is the fastest program of this kind available on the market. However, WizCat cannot do miracles ; if you create huge catalogs that are too big to fit into memory Windows will start swapping memory to and from its swapfile, and that makes WizCat slow down significantly.

Especially when you catalog several CDs in one catalog it can become rather big. It is wiser to create a catalog for each CD .

So either keep the size of your catalogs in reasonable proportions, or go to your local PC shop and buy a few megabytes extra memory...

See also [Program Limitations](#)

Q - Why does it take so long to catalog a CD ?

A - Because it has an awful lot of folders and files on it, and because CD-Players aren't the fastest devices in the world. Especially if you make WizCat catalog the contents of archive-files it can take a while. Activating SMARTDRV will help, but if it still takes too long for your taste the only option is to buy a quad- or eight-speed CD-player...

Q - Can WizCat/PRO also catalog tapes ?

A - Nope ; the necessary device-drivers are commercially available, but they are too expensive to license.

Q - Can you make WizCat/PRO catalog the contents of RAR, SQZ or some other obscure archive format which nobody in the world but me uses, and scan self-extracting archive files, and extract file-comments from archive files ? Other cataloging programs can do it ! If you do I'll register...

A - I've heard that before... If you need any of these features, trash WizCat/PRO and use one of 'the other' programs. This way I save a lot of time not having to make features which are useful to only a handful of users, and all other users won't start complaining hat WizCat/PRO is becoming too complicated and too slow.

Q - Is there a 32-bit version of WizCat/PRO ?

A - No, not yet

Frankly, I have the impression that most people asking for a 32-bit version do so because they're a bit blinded by the Windows 95 hype or just because it sounds 'MORE !'.

But OK, I won't argue with you and I promise that as soon as Borland comes with a Turbo Pascal for Windows 95 I'll make WizCat/PRO go 32-bit.

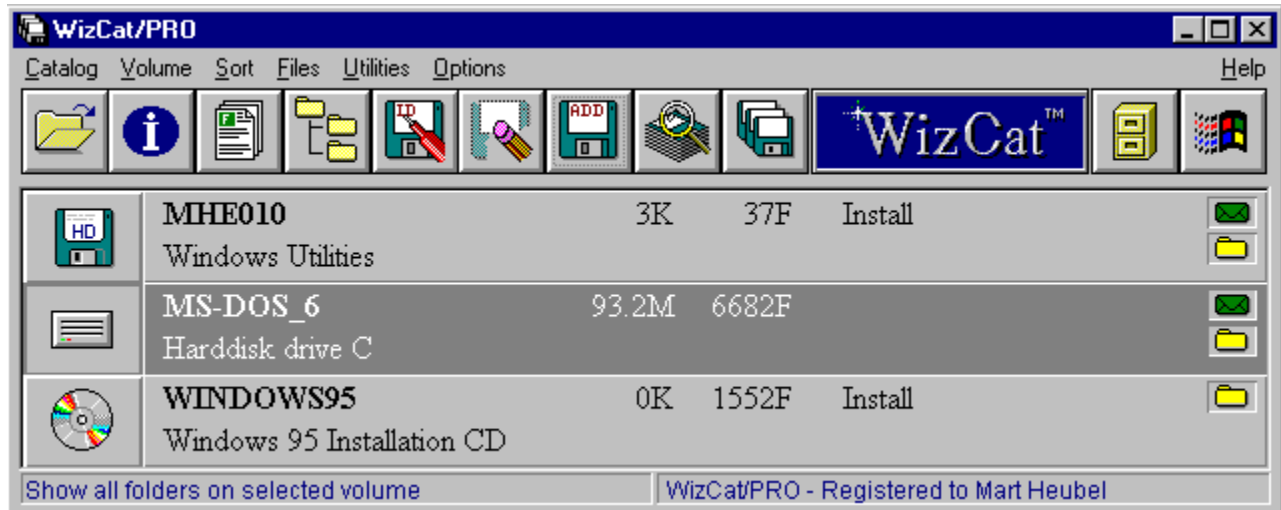
Of course I'll charge you double the price of the 16-bit version of WizCat/PRO. After all, you get twice as much. Fair is fair...



Volume List window

When you start WizCat you'll see the Volume List window, which shows all the disks in the catalog.

Click on any button, menu or field to see a description of its function :



Open catalog

Click this button to display the 'Open Catalog' window, where you can select the catalog to be opened.

Filemanager

Click this button to switch to Windows' Filemanager.



You can customize which program to run when clicking this button ; see [File- and TaskManager](#)

Taskmanager

Click this button to switch to Windows' Taskmanager.



You can customize which program to run when clicking this button ; see [File- and TaskManager](#)

Icon

As a default, WizCat uses its built-in icons to distinguish between 3.5" HD, 3.5" DD, 5.25", CD-Rom and harddisks.



You can change the icon displayed for a particular volume by selecting the Change Volume Icon option on the 'Volume' menu.

Volume-ID

This is the label that's on the disk, or the name you assigned on the Catalog Disk window.



You can change the volume-ID by selecting the Rename button on the Volume List window, or by selecting the 'Rename' option on the 'Volume' menu or the pop-up-menu.

If possible, let WizCat use the disk's label as volume-ID. This enables WizCat to recatalog a disk if you add the same disk again to the catalog.

Contents description

This is a short description of the disk's contents. You can enter or change this description on the Volume Information window.



With the Select Volume Group function on the 'Volume' menu you can limit the volumes displayed to only those that have a certain character-string in this description-field.

Free space

This is the amount of free space left on the disk ; it will be displayed as nnnnK (where K is 1,000 bytes), or as nnnnM (where M = 1,000,000 bytes).



Selecting the 'Sort by Free Space' option on the 'Sort' menu will sort all volumes in ascending or descending free space order.

With the Select Volume Group function on the 'Volume' menu you can limit the volumes displayed to only those that have a minimum of nnnK free space.

Number of files

This is the number of files on the disk.

Group-ID

This is the Group-ID which you can optionally assign to a disk, using the Volume Information window. You can use this field to distinguish between Windows Utility disks, installation disks, DOS disks etc.



Selecting the 'Sort by Group' option on the 'Sort' menu will sort all volumes by group-ID. With the Select Volume Group function on the 'Volume' menu you can limit the volumes displayed to only those that belong to the selected group.

Archive Icon

This icon will be displayed if you made WizCat catalog the contents of archive files like ARJ and ZIP.

If this icon is displayed, you can have a peek into each archive file on this disk by selecting the Show Archive Contents button or menu-option on the File List window.

Folder Icon

This icon will be displayed if the disk contains folders.



By clicking the Show Folders button on the Volume List window, or by selecting the 'Show Folders' options on the 'Volume' menu or pop-up-menu, you can display the disk's folder.

Short Help information

When selecting a menu on the Volume List window, or when moving the mouse-pointer on top of one of the buttons, this line will show a short description of the menu's or button's function.



You can make WizCat display this information in either English, French, German or Dutch by selecting the appropriate 'Language' option on the Configure window

Registration Information

If this line shows the text 'Unregistered Evaluation Copy', it means you should take a look at the [How To Order](#) section in the Help file...

After you've registered WizCat your name will appear here, making it clear to everyone who peeks over your shoulder that you're a very nice person indeed.

Mouse Functions

Click the left mouse-button once on a disk-entry to select this disk.

Double-click the left mouse-button on a disk-entry to display the File List window, showing all files on the selected disk.

Click the right mouse-button once on a disk entry to select this disk, and to display a pop-up-menu, showing the same options as the 'Volume' menu.

Catalog menu

Used to open or create a catalog, to save the currently open catalog, or to show statistics about the currently open catalog.

Options :

Catalog Statistics

Open/Create Catalog

Save Catalog

Save Catalog As

Save Group As

Exit

1..9

Volume menu

Used to work with the selected volume, to add new disks to the catalog or to limit the volumes displayed to a certain group.

Options :

Show Information

Show Files

Show Folders

Rename Volume

Erase Volume

Add New Volume

Change Volume Icon

Select Volume Group



When clicking the right mouse-button on a volume entry, a pop-up-menu will appear which shows the same options as the Volume menu.

Sort menu

Used to sort the volumes displayed on the Volume List window in a particular order.

Options :

Volume-ID : sort by Volume-ID

Free Space Asc.: sort by free space, volume with least free space at top

Free Space Dsc.: sort by free space, volume with most free space at top

Group : sort by group

Location : sort by location

Files menu

Used to search for files by name, description etc., or to display previously tagged files.

Options :

Search FilesDuplicate Files

Display Tagged Files

Reset File Tags

Utilities menu

Used to perform special functions, like importing file-descriptions, printing listings or disklabels, etc.

Options :

Compare

Import

Export

Print Report

Print Disklabels

Options menu

Used to configure WizCat ; you can define folders, programs and options using the 'Configure' option, and you can customize the layout of WizCat's windows with the 'Customize...' options.

Options :

Configure

Help menu

WizCat help and ordering information.

Options :

Contents : displays the Help file

Search for... : allows you to search for a help topic by keyword

Register

How to Order



Change Volume Icon window

If you select one of the two first options on the 'Customize Volume List' window, the Volume List window will show an icon for each volume in the catalog.

As a default, WizCat will use its built-in icons, giving a visual clue whether a volume is a 3.5" HD, 3.5" DD, 5.25", CD or harddisk.

To change the icon displayed for a particular volume, select the 'Change Volume Icon' option on the 'Volume' menu.

This will open a small window, showing all icons contained in the WIZCATIC.DLL icon library that comes with the WizCat package.

To change a volume's icon, first select that volume on the Volume List window (just click once on it), and then **double-click** the desired icon on the Icons window. The entry on the Volume List window will then show the new icon.

To retrieve icons from other icon libraries (for instance the Windows' supplied MORICONS.DLL or PROGMAN.EXE), select the 'Open Icon Library' menu option on the Icons window. This will show an 'Open File' dialog, where you can select any EXE, DLL or ICL icon library, or a discrete ICO file.



Only select icons from libraries that reside on your harddisk(s), NOT from removable disks ! Obviously, WizCat will not be able to load an icon from a file residing on a disk which has been removed from the drive. If this situation occurs, WizCat will display the default icon.



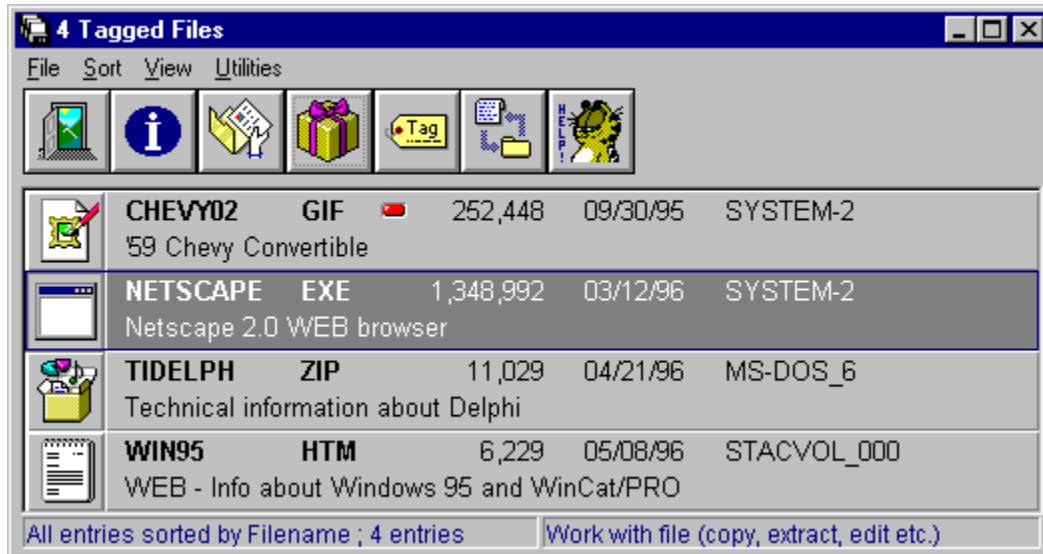
Assigning your own icons to volumes will slow down opening a catalog, because WizCat has to load the icons from the icon libraries every time you open the catalog. However, this 'slow down' effect will only be noticeable if you have lots of disks with custom icons in the catalog.



File List window

This window is used to display all files on a volume, files in a particular folder or files that were found by the search function.

Click on any button, menu or field to see a description of its function :



Icon

WizCat uses a few icons to distinguish between several file-types. Some icons used are :

Window : executable EXE,COM, BAT and PIF files
Box : archive files (like ARJ and ZIP)
Painting : graphic files (like BMP, GIF and PCX)
Notebook : document files (like TXT, DOC and WRI)
Speaker : WAV soundfiles



Click on this field to ' drag' the file to another application.

Filename and filename-extension

This is the name of the file.

Size

The size of the file in bytes. If its size is equal to or exceeds 10 megabytes, it will be displayed as nnn.nM.

Date

The date this file was created or last modified.

Volume-ID

This is the name of the volume that contains the file.

Description

You can optionally assign a description (of up to 500 characters) to each file using the File Information window.



Alternative (and less tedious) ways to enter descriptions are :

- Using the Copy, Edit and Paste functions on the 'Utilities' menu.
- Using the Import function which imports file-descriptions from ASCII textfiles, for instance indexlistings on CD's, BBS AllFiles listings, 4DOS descript.ion files etc.

Clicking the Alternate Display button or menu option will show the folder of this file.

Tag

If you tag (mark) a file using the Tag File button or menu-option, this will be indicated by displaying a red LED.



To remove the tag, click the Tag button once more. To remove tags from all files, select the 'Clear File Tags' option on the Files menu.

Mouse Functions

Click the left mouse-button once on a file-entry to select that file.

Double-click the left mouse-button on a file-entry to run the application that's associated with that file ; if no association exists, the Work with window will be shown.

Click the right mouse-button once on a file entry to select this file, and to display a pop-up-menu, showing the same options as the 'File' menu.

Short Help information

When selecting a menu on the File List window, or when moving the mouse-pointer on top of one of the buttons, this line will show a short description of the menu's or button's function.



You can make WizCat display this information in either English, French, German or Dutch by selecting the appropriate 'Language' option on the Configure window

Status information

This line shows how many files were selected by the 'show all files on volume', 'show all files in folder' or 'search files' functions.

It also tells you what the current sort-order is, and what filetypes are currently being displayed (as selected on the View menu).



If the File List window shows no files at all after a file search, or when you want to display all files in a folder or on a volume, have a look at this line. If it doesn't say 'All entries', the empty display might be caused by the fact that you have selected a function class which filters out all entries.

File Menu

Used to work with the selected file.

Options :

Show Information

Work with

Show Archive Contents

Tag File

Alternate Display

Exit

Sort Menu

Use this menu-option to select how you want the displayed files to be sorted : in filename, extension, folder, volume, date or size (in descending or ascending) order.

View Menu

With these menu-options you can limit the files displayed to those belonging to a certain function class, e.g. programs, documents, sourcefiles etc.



If the File List window shows no files at all after a file search, or when you want to display all files in a folder or on a volume, have a look at the status-line. If it doesn't say 'All entries', the empty display might be caused by the fact that you have selected a function class which filters out all entries.

Utilities Menu

Provides options to copy file-descriptions to, and paste them from, the clipboard and to print the contents of the File List window.

Options :

Copy to ClipBoard, Run Editor, Paste from ClipBoard

Print

Close window

Click this button to close the File List window.

Tag file

Click this button to put a 'tag' (displayed as a red LED) on a particular file.

This can be useful when you're searching for a couple of files ; first use the 'Search' function to find the files one by one and tag them. After you've found what you were looking for click 'Display tagged files' on the 'File' menu et voila, there they are.

Alternate display

Clicking this button will alternately display the files with their comment field only, or with volume, creationdate and folder fields.



You can customize the layout of the File List window using the ' Customize File List window' option on the ' Options' menu ; apart from color and font you can also select the way you want the files displayed.

Copy, Edit and Paste file descriptions

Copy to clipboard

Selecting this menu-option will copy the filenames and their descriptions from the File List window to the ClipBoard.

Edit

Selecting this menu-option will run NotePad (or the editor you specified on the 'Editor=' statement on the 'Configure' window), where you can paste in and edit the file-descriptions you put on the ClipBoard with COPY.

When you have completed editing, use the editor to copy the data back to the ClipBoard and then use PASTE to retrieve the descriptions from the ClipBoard.

Paste from clipboard

Retrieves file-descriptions from the ClipBoard and stores them in the catalog.

The ClipBoard records must have the format 'Filename.Ext Text'.

The filename may be in upper- or lowercase.

Print file list

Selecting this menu-option will print the contents of the File List window on your printer, or to file WIZCAT.LST.



Folder List window

This window shows all folders on the selected disk, together with the number of files and used disk space per folder.

Click on any button or field to see an explanation of its function :

The screenshot shows a window titled "307 folders on volume MS-DOS_6". The window has a toolbar with icons for a folder, a document, and a printer. Below the toolbar is a search filter: "Only display folders that contain this string:" followed by a text input field and a dropdown arrow. To the right of the search filter are two buttons: a green checkmark and a red X. The main area of the window is a list of folders with the following columns: file count, disk space, date, and folder name. The folder "CALLDLL" is highlighted with a grey background. The status bar at the bottom shows the path "DELPHI\DEMOS\CALLDLL\".

Files	Space	Date	Folder Name
867	3F	19-04-96	SUPPORT
2,585,374	12F	04-02-95	DBD
0	0F		DBDPRIV
467,062	8F	17-05-96	DELPHI
17.2M	67F	19-05-96	BIN
12,349	4F	15-05-96	CBTSAMPL
0	0F		DEMOS
233,155	7F	15-02-95	CALLDLL
2,374,984	58F	15-02-95	DATA
0	0F		DB
423,516	7F	15-05-96	ANIMALS
10,445	8F	15-02-95	BDEDLL
8,858	4F	15-02-95	CALCFIELDS

Size

This column shows the total size of all files in each folder.

Number of files

This column shows the number of files in each folder.

Folder-name

In this column, you see the name of every folder.



You can customize the layout of the Folder List window using the ' Customize Folder List window' option on the ' Options' menu ; apart from color and font you can select the way you want the folders displayed : either as a tree list or with each folders' full pathname.

Mouse Functions

Click the left mouse-button once on a folder-entry to select that folder.

Double-click the left mouse-button on a folder-entry to display all files in it on the [File List](#) window.

Close window

Clicking this button will close the Folder List window.

Print folder-list

By clicking this button you can print a listing (either directly to the printer or to file WIZCAT.LST) of the currently displayed folders.

Show files in folder

Click this button to display all files in the selected folder on the [File List](#) window.

Select folders

You can limit the folders displayed to those that contain a certain string : enter the string to look for on this field (or select it again from the drop-down list) and click the OK button on the right.

Click the CANCEL button on the right to display all folders again.



If you select folders, the Folder List will always be displayed with full pathnames, because in this situation a tree list cannot be shown.

Status line

This line shows the full pathname of the currently selected folder.

Last modification date

This column shows the last modification date of the files in each folder.



Catalog Statistics window



STATISTICS

Click this tab to display statistics regarding volumes and files, the catalog and system resources :

File Statistics :

- the total number of volumes and files;
- the total amount of used and free space.

This information is shown for all disks in the catalog, and for those that are part of the currently selected group.

Catalog Statistics :

- the name, size, creation-date and last update date of the currently open catalog

Memory Statistics :

- the amount of memory WizCat allocated for text-buffers (used to store filedescriptions);
- the total amount of memory Windows has available for applications (in megabytes);
- the free percentage GDI and USER resources.



The History, Classes and FileTypes functions show statistics regarding all files in the catalog, unless you select a group of volumes (with the Select Group function). In this case the statistics apply to only those files that are part of that group.



HISTORY

Click this tab to display a list with the total number of files and occupied space by year. Double-clicking an entry on this list will display the File List window, showing all files that were created or last modified in the selected year.



CLASSES

Click this tab to display a list with the total number of files and occupied space by function class.

Double-clicking an entry on this list will display the File List window, showing all files that belong to the selected function class.



FILETYPES

Click this tab to display a list of all filetypes (filename-extensions) that occur in the catalog. Double-clicking an entry on this list will display the File List window, showing all files of the selected type.

Open or create a catalog

Clicking the 'Open...' option on the 'Catalog' menu will display the 'Open or Create Catalog' dialog, where you can select the catalog you want to use.

To [create a new catalog](#), enter the name of a nonexistent catalog (with extension .CAT) and click OK. WizCat then asks if you want to create a new catalog.

As a default, the 'Open Catalog' dialog initially displays the folder you defined as 'Working Directory' on the Programmanagers' 'Program Item Properties' window. You can override this default by specifying the folder to display on the 'Catalog Folder' option on the [Configure](#) window.



You can also let WizCat [open a specific catalog automatically](#) when you start WizCat.

Save catalog

Clicking the 'Save Catalog...' option on the 'Catalog' menu will save all updates you made to the currently open catalog.

WizCat first saves a backup of the original catalog (*.BCK), and then creates a new catalog with extension .CAT.

Save catalog as

Clicking the "Save Catalog As..." option on the 'Catalog' menu will display the 'Save Catalog As' dialog.

Enter the name of the catalog you want to create (with extension .CAT) on this dialog and click OK.

WizCat will then save all updates you made to the currently open catalog in the new catalog.

Save group as

Clicking the "Save Group As..." option on the 'Catalog' menu will display the 'Save Group As' dialog.

With this function you can create a new catalog that contains only the volumes that you've selected with the 'Select Group' function.

Enter the name of the catalog you want to create (with extension .CAT) on this dialog and click OK.

WizCat will then save all information regarding the currently selected group of volumes in the new catalog.

End WizCat/PRO

Clicking the 'Exit' button on the Volume List window (or 'Exit' on the 'Catalog' menu, or 'Close' on the system menu) will end WizCat.

If there are any updates in the currently active catalog that haven't been saved yet, WizCat will ask you if these updates should be saved before actually ending WizCat.

Replies :

YES : all updates will be saved, and WizCat ends.

NO : WizCat will end without saving updates.

Cancel : Ignores the exit command.

Open this catalog

WizCat displays the 9 last catalogs you used on the 'Catalog' menu ; you can immediately open one of these by selecting them on this menu.



Configure window

Clicking the 'Configure' option on the 'Options' menu will display the Configure window, where you can specify WizCat's options and default settings. Click the OK button to activate the selected options, and to save them in file WIZCAT.INI.



CATALOGING

Here you can specify options that apply to cataloging disks :

Copy file-descriptions from 4DOS descript.ion files

Specify whether you want WizCat to copy file-comments from 4DOS descript.ion files and/or files.bbs files (if present) when cataloging a disk.
The default is YES

Replace current descriptions with those from .ION and .BBS files

Specify whether you want WizCat to replace existing filecomments with those that are read from the descript.ion and/or files.bbs files.
The default is NO

Catalog contents of ARJ, ZIP, LZH, ZOO, ARC and PAK archives.

Specify whether you want WizCat to catalog the contents of archive-files when cataloging a disk.
The default is NO

Display Recatalog window when recataloging a disk.

When you catalog a disk that's already present in the catalog, you can let WizCat display a Recatalog window that shows the differences between the information in the catalog, and the actual contents of the disk by enabling this option.
The default is YES

Write new volume-label to floppydisk if volume-id changed

When you enter or alter a floppydisk's Volume-ID on the 'Catalog Disk' window, you can let WizCat write this new ID as a volume-label on the disk by checking a checkbox on the 'Catalog Disk' window.
Here you can specify the initial setting of that checkbox.
The default is NO.

Display Volume Information window after cataloging a disk

If you select this option, WizCat will display the Volume Information window when a disk has been cataloged ; on the Volume Information window you can then enter the disk's description and group ID's.
The default is YES.



FOLDERS

Here you can specify folders to be used by WizCat :

Folder where *.ACT files are saved

Specify where you want WizCat to save its .ACT files when cataloging the contents of archive-files on a disk.

Enter a full pathname, like C:\WINDOWS\MYDATA or D:\BACKUP\DATA\
The default is C:\WIZCAT\ARCHIVES

Folder where catalog files (*.CAT) are saved

This is the folder WizCat initially displays on the 'Open Catalog' window.

The default is the 'working directory' you specify on the Programmanagers 'Program Item Properties' window.

Default target folder for ' Restore File' function

This is the target folder that WizCat will initially select for restoring files.

Specify the name of an existing folder, like C:\RESTORE or D:\TRASH\
The default is C:\



PROGRAMS

Here you can specify programs to be used by WizCat :

Editor called by WizCat to edit files

Specify which editor you want WizCat to use, for instance when displaying the output of the Print function.

Enter a full path/filename, like C:\WINDOWS\PROGRAMS\MEGAEDIT.EXE or D:\PFE.EXE.

The default is NOTEPAD.EXE.



GENERAL

General WizCat options :

Auto-save updated catalogs

If this option is set, WizCat will save updated catalogs automatically when opening another catalog, or when ending WizCat.

The default is NO, which means that WizCat will ask if the catalog should be saved.
Note : use this option with caution !

Display toolbar on Volume- and File-List windows

If set, WizCat will display toolbar-buttons for the most frequently used functions on the Volume List, File List and Archive-file List windows.

The default is YES.

Keep backup of catalog files

If set, WizCat will create a backup copy of a catalog everytime you change it. These backup files are named *.BCK.

If something happens to the catalog file, you can rename the *.BCK file to *.CAT and continue to use that catalog.

You might consider setting this option to NO if you use an alternative way to backup your data files (for instance a backup to tape).

The default is YES.



LANGUAGE

Language

Select in which language you want WizCat's menu's, pop-up-menu and help-messages displayed : English, French, German or Dutch.
The default is English.



Select Volume Group window

With the 'Select Group' function you can limit the volumes displayed on the Volume List window to those belonging to the selected group, location or owner.

You can also select a group of volumes with a minimum amount of free space, volumes of a certain disktype (e.g. all 3.5" 1.44 MB disks) or volumes that have a certain string in their description field.

This can be useful when you have a lot of disks in your catalog : instead of scrolling through a long list of volumes on the Volume List window, you can use the 'Select Group' function to select for instance only those disks that contain Windows programs or games, only those disks that belong to owner John or only those disks that have more then 300K free space.



When you select a group, ALL(*) WizCat functions (like search, print, import, export etc.) will operate only on (files on) volumes belonging to that group.

This means that if you have selected volume group 'Windows' and want to search for files with string 'driver' in their comment field, WizCat will show only those files that reside on one of the volumes that belong to the selected group 'Windows'.

(*) Only exception : the 'Save Catalog (As)' function ignores groups ; the catalog will always be saved in its entity, regardless of whether or not a group is selected.

Duplicate files

Use this function to display all files that occur more than once in the catalog.

Display tagged files

Clicking the 'Display Tagged Files' option on the 'Files' menu will display the File List window, showing all files you tagged with the Tag function.

Reset file tags

Clicking the 'Reset File Tags' option on the 'Files' menu will clear all filetags.



Compare window

Clicking the 'Compare' option on the 'Utilities' menu will display the 'Compare' window.

You can use this function to let WizCat compare the contents of a folder on your harddisk, or the contents of a floppy disk, with the information in the catalog. So you can easily see whether or not files are cataloged, and if so on which volume(s) they reside.

First select the disk or the folder you want to check against the catalog, and click OK. WizCat will first sort the catalog, and then shows which files from the selected disk or folder are present in the catalog.



Import window

Use this function to import file-descriptions from BBS AllFiles listings, listings from other disk catalog programs, 4DOS descript.ion files, CompuServe *.CAT listings, index-listings on CD-ROMs etc.



SELECT

First select the text file which will be used as input for the ' Import' function. This must be a 'normal' ASCII text file, that is each line must end with a hex '0D0A' line delimiter.

Next specify the format of this textfile :

Single- or multi-line

This is the most common format for BBS AllFiles listings and index-listings on CD-ROMS ; a line in this textfile starts with a filename, followed by the file's description which can be several lines long.

Example :

```
PHOLAB18.ARJ 117979 29-05-93 [22] Photolab 1.8.0 Image Processing.  
                Photolab is an Image processing system that allows you  
                to view scanned or digitized images on your PC
```

WizCat will import the first line, and all continuation-lines as long as they begin with at least 10 spaces.

WizCat will stop importing continuation-lines when

- a blank line is encountered or
- a line doesn't begin with at least 10 spaces or
- a total of 500 characters for the current file's description is reached.

(The filename may be in upper or lowercase, and may be preceded by spaces.)

Let's look again at the example line :

```
PHOLAB18.ARJ 117979 29-05-93 [22] Photolab 1.8.0 Image Processing.
```

Normally you aren't interested in details like the file's size, date and download-count (shown above in red).

You can make WizCat skip these details when importing descriptions : all you have to do is to tell WizCat how many words to drop from the text following the filename.

In the above example, the filename PHOLAB18.ARJ is followed by 3 words (strings delimited by one or more spaces) which should be removed, so the number to specify is 3.

CompuServe *.CAT listing

CompuServe supplies *.CAT listings (in TAPCIS format), where the description for each file looks like this :

```
[72123,501]      Lib:10  
FR.ZIP/Bin      Bytes: 14242, Count: 43, 08-Sep-93
```

```
Title : Universal Text Find & Replace Utility v1.0
```


Keywords: TEXT STRING FIND REPLACE UTILITY EXE COM DLL DOC

FR is a universal text string Find & Replace utility that works with any file sizes, any file types, and any file formats such as; .exe, .com, .dll, txt, .doc, .asc, .bmp, .tif, .cdr, etc.. you name it!

WizCat locates every filename in a .CAT listing (FR.ZIP in this example), and imports the description-lines (those following the Title and Keywords lines) to its catalog.

When you click OK, WizCat will first sort the files in the catalog (or in the current active group), and then scan the selected textfile.

For each filename found in the textfile WizCat will check whether a file with this name exists in the catalog. If so, WizCat will copy the description that follows the filename (in the textfile) to the corresponding file in the catalog, and set that file's TAG.

After WizCat has finished reading the textfile he'll display the 'Files' window, showing all (TAGged) files that were updated.

If you're not completely happy with the result you can use [COPY], [EDIT] and [PASTE] to change things.



OPTIONS

Several options allow you to customize the importing of file-descriptions :

1. Specify whether or not you want WizCat to take filename-extensions into account when comparing filenames from the textfile with those from the catalog.

If you set this option to 'YES', WizCat will ignore extensions and so will consider file 'SAMPLE.ARJ' to be the same as file 'SAMPLE.ZIP'.

2. Specify whether you want WizCat to replace existing file-descriptions with the imported ones by clicking the appropriate checkbox.

3. You can make WizCat strip all nonstandard characters from the imported text. This can be useful to remove carriage-returns, tabs, graphic characters etc.



Export window

Clicking the 'Export' option on the 'Utilities' menu will display the 'Export' window.

This function exports the information in the catalog (or in the current active group) to a file in DBF format. The .DBF file can be used with database products like dBase, Paradox, Excel etc.

WizCat will create a record in the .DBF file for each file in the catalog or group. Apart from the name of each file (which is always part of a record) you can select additional fields you want included in each record : volume id, folder, date, size and/or comment.



WizCat truncates comment-fields to 75 characters in order to keep the size of the generated DBF file in reasonable proportions.



Printing Reports

Clicking the 'Print Report' option on the 'Utilities' menu will display the Reports window :



REPORTS

Here you can select the type of report to be printed :

Volume Summary

A summary list of all volumes.

Volume Contents

A list of all volumes and their contents.

Files sorted by Filename

A list of all files in the catalog, sorted by filename

Files sorted by Class

A list of all files in the catalog, sorted by function class.

Duplicate Files

A list of files that occur more than once in the catalog.

Archive Contents

A list of all files in archive files.



FIELDS

Here you can select the fields you want included on the reports to print.



CLASSES

Here you can optionally select one or more function-classes ; as a result, only files belonging to the selected function class(es) will be listed on the report.

When printing a report (either by using the 'Report...' option on WizCat's main menu, or by clicking the 'Print' button on a listbox), WizCat displays a window where you can :

- cancel the print
- select the print destination (either to file WIZCAT.LST, or directly to your printer)
- indicate you want to edit the listing (if you select 'File' as destination) after it has been created.



Print Disklabels

Clicking the 'Print Disklabels' option on the 'Utilities' menu will display the 'Print Disklabels' window.

This window doesn't actually print the labels ; it just creates a file (WOODLE.INP) that serves as input for the WOODLE utility.

First select the volumes you want to print a label for ; after doing so, click the 'Create WOODLE.INP' button.

WizCat will then create the input-file file for WOODLE, and will ask you whether you want to run the WOODLE Disklabel Editor to select a label-layout and to print the labels.



Registering WizCat/PRO

WizCat/PRO is not free software. If you use this software after the 21 day evaluation period a license (with a registration fee of 15 US dollars) is required.

Paying the registration fee entitles you to use WizCat/PRO version 4.2, [and all other subsequent 4.x releases](#) that may be distributed.

Two types of licenses are available : the one for personal use, and the multi-workstation license for company use.



License for personal use :

This license can be transferred freely from machine to machine as long as there is no chance that it is ever in use on more than one machine.

You are encouraged to share your evaluation copy of WizCat, but you may not distribute registered copies or registration numbers under any circumstance.

The registration number (which disables the registration reminder that appears when opening a catalog) will be sent to you immediately after I've received the registration-fee.

Please read : [How to order a Personal License](#)



Multi-workstation or site-license :

For companies, public services and other organizations multi-workstation site licenses are available.



Very attractive conditions apply to organizations involved in education and research !

The multi-workstation license allows you to install and use the registered copy of WizCat/PRO 4.x on as many workstations as stated on the license-agreement.

If you install WizCat/PRO on a LAN server-station, you're allowed to use it from as many workstations as stated on the license-agreement.

You may not distribute your registered copy of WizCat/PRO to, or use it on, workstations that aren't used by employees of your company.

You can always upgrade your existing license for use on more workstations ; the required fee will be the difference between the normal fee for the new license and the fee you already paid.

Please read : [How to order a Site License](#)



How To Order Your Personal License

There are several ways to order your WizCat/PRO license :

1. directly from the author ;
2. by creditcard from the American Public software Library ;

1. Ordering a WizCat/PRO Personal License from the author :

Send the WizCat orderform (and optionally the questionnaire) plus the required registrationfee to :

Mart Heubel
De Heugden 161
6411 DR Heerlen
The Netherlands

Choose one of these methods to pay :

Cash Enclose **US\$15.00** or **HFI. 25,00** in cash with the orderform.
US dollars or Dutch Guilders are preferred, but (if the bank charges you an outrageous fee for changing currency) the equivalent amount in any other currency will be accepted too.

Giro Maak **HFI 25,00** over op postgiro-rekening 4086382
tnv. M.B.M. Heubel in Heerlen, o.v.v. 'Licentie WizCat/PRO'
Bij gebruik van GiroTel uw adres vermelden op de commentaarregel !
Note : This method is applicable to **Dutch users only** !

EURO-Check Enclose an EURO-Check worth **HFI 25,00** with the orderform.
Please make sure you have signed the check, and don't forget to enter the number on the back of it !
Note : this method is applicable to **European users only** !

Note 1 : **American, Canadian, Australian etc. checks/cheques can not be accepted !**

The reason for this is that the transaction-costs charged by the banks to either or both you and me are so outrageous that they are almost ridiculous : they vary from \$9 to \$30 (yes, thirty !!), and seem to depend on the mood of the bankemployee and the weather.

So, if you are not a European user : please don't send a check ; all I can do with it is tear it up.

Consider sending plain cash (dollar bills), or register using your credit card by calling the Public (software) Library (see below).

Note 2 : **The author can not accept registration by credit card !**

If you want to register using your credit card, please call the Public (software) Library (see below).

Note 3 : In order to keep WizCat's price as low as possible the author sends you a **license plus registration number only** ; a disk, a 4-color glossy manual or other unnecessary stuff is NOT included (and not available) !

2. Ordering a WizCat/PRO Personal License from the Public software Library :

You can order your WizCat/PRO Personal License from the American Public software Library with your **Visa, MasterCard, American Express, or Discover credit card** by calling:

Toll-free within the United States	800-2424-PSL
when calling from outside the USA	(001) 713-524-6394
or send a FAX to	(001) 713-524-6398
or send a CompuServe message to	71355,470

PSL Office hours : 7:00 a.m. to 6:00 p.m. CST on Monday-Thursday
7:00 a.m. to 12:30 p.m. CST on Fridays

Please supply this information to PsL :

- I want to register WizCat/PRO, Item Number 10966
- my creditcard number is
- the card's expirationdate is
- the cardholder's name (exactly as it appears on the card) is...
- the card's billing address is



The total registration-fee when ordering by creditcard from PsL is US \$20.00

(\$ 15.00 license-fee plus \$5.00 PsL handling-fee).

This price **includes** postage to send your license worldwide.

IMPORTANT INFORMATION FOR CREDIT CARD CUSTOMERS:

Credit card registrations for WizCat/PRO are handled through the Public software Library's ShareWare Registration Service.

PsL will notify the author the day of your order. Your license will then be shipped by the author within 24 to 48 hours.

Please note that the numbers listed above are for ORDERING ONLY !

The author can NOT be reached at those numbers ; please read [Your Comments Please](#) for information about how to contact the author.

When ordering a WizCat/PRO license from PsL, the same conditions apply as when ordering directly from the author :

* by registering WizCat/PRO you acknowledge and consent to the [disclaimer of warranty](#)

* In order to keep WizCat's price as low as possible the author sends you a **license plus registration number only** ; a disk, a 4-color glossy manual or other unnecessary stuff is NOT included (and not available) !



How To Order A Site License

Site licenses can only be ordered directly from the author.

The following prices apply to site licenses for use on...

up to 5 workstations	US\$ 50	(HFI. 100)
up to 10 workstations	US\$ 75	(HFI. 150)
up to 25 workstations	US\$ 125	(HFI. 250)
up to 50 workstations	US\$ 200	(HFI. 400)
up to 100 workstations	US\$ 300	(HFI. 600)
more than 100 workstations	- please contact the author -	



Special offer :

Universities, schools and non-commercial organizations involved in science, research, public health, religion, environment protection or development are entitled to a 30% discount !

When ordering a site-license you'll receive a registration-number and a disk with the latest version of WizCat/PRO.

Choose one of these methods to pay :

Giro Betaling door overmaking van de licentie-kosten op de postgiro-rekening van :
M.B.M. Heubel
Rekeningnummer 4086382
O.v.v. 'Site Licentie WizCat/PRO voor ... werkstations'
Note : This method is for **Dutch users only** !

EURO-Check Send one or more EURO-Checks that cover the required registration-fee along with your order.
Please make sure you have signed the check(s), and don't forget to enter the number on the back of it/them !
Note : this method is for **European users only** !

Check Send one or more Checks that cover the required registration-fee plus \$9.00 handling fee along with your order.
Check(s) should be made payable to : M. B. M. Heubel
Note : this method is for **non-European users only** !

Note 1 : Because of the amounts involved when ordering a site license by sending checks, I strongly advise to send your order as a 'Registered Letter' (aangetekend / lettre recommande) to the author.

Note 2 : Please contact the author before ordering a 'up to 25 workstations' or up site license, in order to make arrangements

for payment.

Note 3 : Unfortunately, the author cannot accept credit card orders.



WizCat/PRO 4.2 Orderform

(click the [Print Topic](#) option on the [File](#) menu to print this form)

YES, I would like to become a registered WizCat/PRO user, so I hereby order my own personal license !

The registration-number that I will receive entitles me to use WizCat/PRO version 4.2, [and all other subsequent 4.x releases](#) that may be distributed.

I will pay the required registration-fee by/with (please check) :

Cash Enclose **US\$15.00** or **HFI. 25,00** in **cash** with this orderform.
[] US dollars or Dutch Guilders are preferred, but (if the bank charges you an outrageous fee for changing currency) the equivalent amount in any other currency will be accepted too.

Giro Maak **HFI 25,00** over op postgiro-rekening 4086382
[] tnv. M.B.M. Heubel, ovv. 'Licentie WizCat/PRO'
Note : This method is applicable to **Dutch users only** !

EURO-Check Enclose an EURO-Check worth **HFI 25,00** with this orderform.
[] Please make sure you have signed the check, and don't forget to enter the number on the back of it !
Note : this method is applicable to **European users only** !

Note 1 : **American, Canadian, Australian etc. checks/cheques can not be accepted** because of huge transaction costs.
Consider sending plain cash (dollar bills), or register using your credit card by calling the [Public \(software\) Library](#).

Note 2 : In order to keep WizCat's price as low as possible the author sends you a **license plus registration number only** ; a disk, a 4-color glossy manual or other unnecessary stuff is NOT included (and not available) !

Send my license and registrationnumber to :

Name Mr/Mrs/Ms.....

Address
.....
.....

Email address

By registering WizCat/PRO I acknowledge and consent to the [disclaimer of warranty](#) as stated in WIZCAT.HLP.

Date :

Signature :



WizCat/PRO Questionnaire

(click the [Print Topic](#) option on the [File](#) menu to print this form)

In order to continue to improve WizCat the author would like to know a few things about your computer equipment, how you use WizCat and of course what you think of WizCat. So please take a minute to answer these questions, and send this questionnaire along with the orderform.

What type of CPU do you have ?

- 386- 486- SX DX 586-Pentium Pentium Pro

What is the speed of your CPU (in megaHertz) ?

- < 50 50 66 75 100 133

What is the amount of memory in your system (in megabytes) ?

- 4 8 12 16

Which operating system do you use ?

- Windows 3.1 Windows for Workgroups Windows 95 Windows NT OS/2

Which diskdrives do you use ?

- 3.5" floppy CD-ROM ZIP drive Bernoulli
 5.25" floppy Optical JAZ drive DAT minidisk

Can you give an estimate of how many disks/files you're going to catalog with WizCat ?

- FloppyDisks : _____ / _____
CD-ROMS : _____ / _____
Other : _____ / _____

Where do you use WizCat ?

- At home At work Both

Which disk catalog program (if any) were you using previously or have you tried ?

- CatDisk for DOS WinCat 2.x DiskTrak ZipCat
 CatDisk for Windows SmartCat DiskMan

Where did you get your copy of WizCat ?

- Bulletin Board System from a friend Shareware disk/CD :
 WizCat WEB page Internet FTP site Public software Library (PsL)
 CompuServe

Your verdict please : on a scale from 1 (utterly lousy, it stinks etc.) to 10 (excellent, out-of-this-world etc.), how would you rate :

- The overall impression WizCat makes _____
- WizCat's speed _____
- WizCat's features and functions _____
- WizCat's graphic user interface _____
- WizCat's WOODLE disklabel print utility _____
- Ease of use _____

- The WizCat On-line Help _____

What do you like best in WizCat ?

What do you definitely DON'T like in the current WizCat release ?

Which feature(s) or function(s) would you like to see in a new release of WizCat ?



Entering Your Registration Number

Clicking the 'Register' option on the 'Help' menu will display the 'Register WizCat' window, where you can enter your name and the [registration-number](#) that's listed on your license-agreement.

When you send me WizCat's orderform (plus the money of course...), you'll receive a registration-number that disables the registration reminder window that appears when opening a catalog.

This unique registration-number was generated by a fractal generator that takes your name as input and (after 3 minutes calculating on a 200 Mhz Pentium Pro), spits out a 9 or 10 digit number (believe me, even I don't know how this actually works).

So, to register WizCat you must enter your name and the registration-number **exactly** as stated on the license-agreement, because WizCat will check the number against the name (surprisingly, this takes almost no time at all... but then, I don't know how this works either). If WizCat detects that the name and number don't match, registration will fail. If you enter the correct name and number, WizCat will say 'thanks for registering !', and your name will appear on the WHOF window.



To enter national language characters like ü, ö and æ you must enter the character's ASCII code. For instance, to enter the character ü you must press the ALT key and enter 0252. The Windows' Character Map program (CHARMAP.EXE) shows which code corresponds to which character.

WizCat saves your name and the registration-number in file WIZCAT.INI. If, for some reason, this file gets accidentally erased you must reenter your registration. So don't throw away the license-agreement once you've registered, as you might need it again in the future !



About the Author

Mart Heubel popped into this world at a very cold December 20, in 1961 in Maastricht, The Netherlands. It was 04:20 in the morning and, because his dad forgot to turn on the heating, FREEZING outthere. Ever since, Mart hated to get up early.

Although very intelligent, Mart decided to keep a low profile during his schooldays. Years passed, and nothing remarkable happened.

At the age of seventeen Mart met his first girlfriend. After a while, she dumped him and Mart went to university to study electronics. After a while, they dumped him and Mart became a successful mainframe systems programmer.

Currently, Mart lives in Heerlen. When not working, he likes to ride his Italian Moto Guzzi motorbike and read Garfield cartoons, from one of which he adopted his motto in life :.

" Some people live exciting lives ; others seek romance and adventure. And the occasional lunatic writes a disk catalog program "



License and Trial Period

When using an unregistered version of WizCat, each catalog you create has its own evaluation period of 21 days. When this standard evaluation period has ended WizCat still allows you to use that catalog, but you'll receive an 'Evaluation period expiring !' message each time you open that catalog.

After entering your registration-number on WizCat's 'Register...' window, you won't be bothered with nagging messages ever again.

Please read carefully the following terms and conditions before using or distributing this software. Using or distributing this software indicates acceptance of these terms and conditions.

COPYRIGHT

The shareware evaluation version of WizCat/PRO and its related programs and documentation (hereafter, "the Software") is Copyright © 1992-1996 by Mart Heubel (hereafter, "the Author") and is protected by Dutch copyright laws and international treaty provisions.

The author, as exclusive publisher, is an authorized representative of the copyright holder. Except to the extent expressly licensed, the copyright holder has and reserves the exclusive copyright and other right, title, and interest to copy and distribute this software, and the right to use the Trademark "WizCat/PRO" in connection with it.

LICENSE

The Author hereby grants you a limited, non-exclusive license to use the Software contained in the shareware distribution package (hereafter called the "Shareware Package") you received.

The Shareware Package consists of copies of the Software received via an electronic transfer mechanism or an electronic storage medium including, but not limited to, diskette, hard disk, removable disk, tape or optical devices such as CD-ROM or WORM.

You may use the Shareware Package on one or more computers provided there is no chance that it will be used simultaneously on more than one computer. If you need to use the Software on more than one computer simultaneously, please contact the Author for information about site licenses.

You are not obtaining title to the Software or any copyright rights.

You may not sublicense, lease, rent, sell, convey, translate, modify, decompile, incorporate into another product, convert to another programming language, reverse engineer or disassemble the Software for any purpose.

TERM AND TRIAL PERIOD

You are permitted to use the Software for a trial period of 21 days after installation of the Shareware Package. After such time, if you continue to use the Software, you must register

your copy.

Failure to register after the Trial Period constitutes termination of this license.

Upon registration, a registration-number will be provided to eliminate the registration reminder screens.

This license is effective until terminated. You may terminate it by destroying the Software, Documentation, and all copies thereof. This license will also terminate if you fail to comply with any of the terms or conditions herein. You agree, upon such termination, to destroy all Software and copies thereof.

See also :

[Disclaimer of Warranty](#)

[Noncommercial Distribution](#)

[Vendor Information](#)



Where to get WizCat/PRO



World Wide Web

Don't miss the WizCat/PRO WEB pages !
For up-to-date release information, FAQ's, the latest WizCat/PRO software and uhhh...
bugfixes.

Tune in on URL : <http://www.xs4all.nl/~wincat/>



CICA (Internet)

If you have access to the Internet, you can find WizCat/PRO (and do an anonymous
filerequest) at <ftp.cica.indiana.edu> in the folder [pub/pc/win3/](ftp://pub.pc.win3/).



CompuServe (CIS)

The latest version of WizCat/PRO will also be available on CompuServe : go to forum
[WINSHARE](#) and look in library [Disk Utilities](#).



WIN*NET

WizCat/PRO is distributed through the international WIN*NET network, and so should be
available on every local Windows BBS that has a connection to WIN*NET.



America OnLine (AOL)

The latest version of WizCat/PRO will also be available on America OnLine.



Public software Library

You can also order a disk with the latest version of WizCat/PRO from PsL ; please look in their
latest Shareware catalog for details.



CD-ROM

Good chance you'll find WizCat/PRO on CD-ROMs containing Windows shareware programs, for instance CICA MS-Windows, WinWare, Night Owl Windows, SIMTEL, etc..

Nevertheless, if you can't find WizCat on a shareware CD you bought : get very angry, call the supplier and ask him why the f*ck they didn't include it... ;-)



... and every serious Windows BBS !

But if your local BBS doesn't have the latest version of WizCat/PRO and you do, please do them and your fellow Windows-freaks a favor and upload the WizCat package ; as a reward you'll receive good karma and a LOT of upload-credits ! :-)



Your Comments...

Registered WizCat/PRO users : if you discover serious bugs in WizCat, or if you have any "wouldn't it be nice if WizCat ..." ideas, feel free to drop a message in my mailbox at

WWW : <http://www.xs4all.nl/~wincat/>

or

Internet : wincat@xs4all.nl

: 72066.2116@compuserve.com

or

CompuServe: Mart Heubel, userid 72066,2116



Distributing WizCat/PRO

The following applies to noncommercial distribution only :

Distribution is noncommercial if it is for free, or by a hobby, user or computer interest group to its members, or by any BBS (including CompuServe, CIX and Internet networks). For terms and conditions that apply to any other kind of distribution, refer to the Vendor Information section.

The evaluation-copy of WizCat/PRO (i.e. the original WizCat/PRO package without the registration number) may be freely copied and distributed on a noncommercial basis as long as the following conditions are met :

- [1] You may not distribute registered copies or registration numbers under any circumstance.
- [2] No fee is charged other than a normal time usage fee required by some Bulletin Board Services, or a fee for media- and distribution-costs, not to exceed US\$ 4.00 per disk.
- [3] The program and its associated files are distributed in their original, unmodified form.
- [4] All document files are included with the executable files without modification.



Vendor Information

This section contains sample descriptions for catalog, library, or BBS use, requirements for commercial distributors, and other information.

Suggested one-line program description :

WizCat/PRO Disk and CDROM Catalog/FileManager

Suggested keywords :

WizCat Windows DiskCatalog Catalog FileManager Disk CDROM Utility

Suggested description :

WizCat/PRO Disk and CDROM Catalog : to boldly go where no cat has gone before !
WizCat/PRO brings order in your growing collection of files on floppydisks, CDROM's, harddisks etc.

It is easy to use, yet powerful, fast (Turbo Pascal) and offers you splendid graphics.
Because WizCat/PRO interfaces to all DOS/Windows programs (like WinZip), you can easily restore, extract, run, edit etc. any file with a single mouseclick.

WizCat/PRO optionally catalogs the contents of ZIP, ARJ, LZH, PAK, ARC and ZOO archive files.

Features : extensive search/sort/view capabilities, imports file-descriptions from text-files, 4DOS description files etc., exports to DBF compatible file and various user-configurable reports.

Free utilities included :

- * WOODLE disklabel printer with convenient WYSIWYG editor;
- * WizCat/unZIP, extracts ZIP and ARJ archive files.

System requirements :

Hardware : at least 4MB RAM, 2MB disk space

Software : Microsoft Windows 3.1/3.11 or Windows 95

Recommended : Mouse or other pointing device

Optional : WinZip ((c) Nico Mak Computing, Inc.) for extracting archive files

Optional : High-quality (Laser-, Jet-, Bubble-) printer for printing disklabels.

Registration :

Registration-fee for a single Personal License is US\$ 15.00. (disk NOT included).

Author :

Mart Heubel, De Heugden 161, 6411 DR Heerlen, The Netherlands

Commercial Distribution License Agreement :

The terms below outline requirements for commercial distribution. "Commercial distribution" or "commercially distribute" means to distribute for gain (such as, but not limited to, via

traditional shareware catalogs, shareware packages, trade shows, or rack vending). This file will inform the potential commercial distributor as to whether or not they have been automatically granted such a license for their type of distribution (if not, special written authorization is required). Other important information is also presented.

The Distribution License Agreement applies to distribution of the **WizCat/PRO shareware evaluation version only** ; distribution of registered copies of WizCat/PRO or WizCat/PRO registration-numbers by any vendor, individual, group or entity is explicitly prohibited.

This is an agreement between you (either an individual or an entity) and the author. By commercially distributing copies of the shareware evaluation version of WizCat/PRO, you are agreeing to be bound by the terms of this agreement.

If you do not agree to the terms of this agreement, you may not distribute the shareware evaluation version of WizCat/PRO.

COPYRIGHT : The shareware evaluation version of WizCat/PRO and its related programs and documentation (hereafter, "the SOFTWARE") is Copyright © 1992-1996 by Mart Heubel (hereafter, "the author") and is protected by Dutch copyright laws and international treaty provisions. The author, as exclusive publisher, is an authorized representative of the copyright holder. Except to the extent expressly licensed, the copyright holder has and reserves the exclusive copyright and other right, title, and interest to copy and distribute this software, and the right to use the Trademark "WizCat/PRO" in connection with it.

DISTRIBUTION VIA CATALOGS : Catalog vendors are automatically granted a license to distribute the SOFTWARE via their catalog for a fee provided they agree to abide by the following terms:

- [1] A copy of the first catalog or listing advertising the distribution of the SOFTWARE will be sent to the author.
- [2] The catalog or listing must contain a statement to the effect that the SOFTWARE is not free, and that additional payment to the author/publisher is required after a stated evaluation period. (The standard statement required by the Association of Shareware Professionals is sufficient.)
- [3] Updated versions of the SOFTWARE sent to the distributor will be reflected in what is distributed and advertised in the catalog or listing as soon as possible.

DISTRIBUTION VIA CD-ROM : CD-ROM vendors are automatically granted a license to include the SOFTWARE on Shareware compilation CD-ROMs to be distributed for a fee, provided they agree to abide by the following terms:

- [1] The CD-ROM package must contain a statement to the effect that the SOFTWARE is not free, and that additional payment to the author/publisher is required after a stated evaluation period. (The standard statement required by the Association of Shareware Professionals is sufficient.)
- [2] Updated versions of the SOFTWARE sent to the distributor will be reflected in what is distributed as soon as possible.

ALL OTHER TYPES OF DISTRIBUTION (RACKS, PACKAGES etc.) :

Distribution of the SOFTWARE using any other method (for example: via rack vending methods, sale in a retail store, sale at a trade show, as part of some more inclusive product or service) requires special written authorization from the author, which may be subject to

special licensing terms.

No vendor, individual, group, or entity has a license to distribute the SOFTWARE using any other method without special written authorization from the author.

(NOTE: "as part of some more inclusive product or service" does not refer to distribution via any type of BBS or the practice by certain catalog/CD-Rom vendors of offering several programs on a single diskette/CD-Rom or in a set of multiple diskettes.)

REGISTRATION SERVICES : Without special written authorization from the author, no vendor, individual, group, or entity is authorized to provide a registration service for the SOFTWARE or to handle registrations for the SOFTWARE on behalf of the author.

MODIFICATIONS : The SOFTWARE package may not be abridged or otherwise modified in any way.

(NOTE: This does not refer to the addition of installation, informational, or advertising files by catalog/CD-Rom vendors.)

REVOCAION OF LICENSE : The license to distribute the SOFTWARE can be revoked from any vendor, individual, group, or entity at any time for any reason on 30 days advance written notice.

DAMAGES : Distribution of the SOFTWARE without a license to do so is explicitly prohibited. Liquidated damages for unauthorized distribution shall not be less than \$5.00 (in U.S. funds) for each individual copy of the SOFTWARE that is sold or transferred by the vendor, individual, group, or entity without a license to do so.

DISCLAIMER OF WARRANTY : See [Disclaimer of Warranty](#)



Copyright Notice

WizCat/PRO TM
© 1992-1996 by **Mart Heubel**

WOODLE TM
© 1993-1996 by **Mart Heubel**

All rights reserved

The WizCat/PRO and WOODLE software including related programs and documentation are owned by the author (Mart Heubel, Heerlen, The Netherlands) and are protected by Dutch copyright laws and international treaty provisions. Copies of the WizCat/PRO and/or WOODLE programs and/or any of their associated files remain property of the author. Except to the extent expressly licensed, the copyright holder has and reserves the exclusive copyright and other right, title, and interest to copy and distribute this software, and the right to use the Trademark "WizCat/PRO" in connection with it.



Disclaimer of Warranty

By using and/or registering WizCat/PRO you acknowledge and consent to the following

DISCLAIMER OF WARRANTY :

WizCat/PRO, including all related programs, texts, and files, is supplied "as is". The author disclaims all warranties, expressed or implied, including, without limitation, the warranties of merchantability, compatibility now or in the future with any configuration of computing equipment or software, or of fitness for any purpose.

The author assumes no liability for damages, direct or consequential, which may result from the normal use or abuse of WizCat/PRO and related programs.

The author specifically and categorically disclaims responsibility for damages, direct or consequential, resulting from installation or use of WizCat/PRO or related programs or files which have been distributed after any modification - either deliberate or unwitting - by any party other than the author, or distributed in any fashion that would otherwise violate the terms of this license.

If you do not agree to the terms in this agreement, you must cease using and/or distributing WizCat/PRO immediately.



WizCat/PRO Features

- * WizCat/PRO is **easy to use**
- * WizCat/PRO is **fast** ! (developed with Turbo Pascal for Windows)
- * WizCat/PRO uses **state-of-the-art graphics** to display data from its catalog. You can choose from a variety of display modes.
- * **Multi-language support** : choose from English, French, German and Dutch
- * Full **Drag-and-Drop** support
- * The 'Work with file' function shows icons of your favorite applications ; with a simple double-click on an icon you can start a program, which then opens the selected file.
This makes it easy to extract archive files, edit textfiles, display graphics etc.
- * Supports Windows 95 Long Filenames
- * For each file you can enter a description of up to 500 characters.
- * Reads subdirectories up to 8 levels deep
- * Supports various disktypes (floppydisk, CD-ROM, harddisk, networkdisk etc.)
- * Extensive file-search capabilities (you can use multiple arguments with and/or/not operators) and the View filter ensure that you'll quickly find what you're looking for.
- * ClipBoard interface for easy editing file-descriptions
- * Includes an import/conversion tool that extracts file-descriptions from BBS Allfiles-listings, CompuServe CAT listings or listings from other disk catalog programs
- * Automatically copies file-descriptions from (4DOS) description files to its catalog
- * User-definable reports : Volume Summary, Volume Contents, Files sorted by Filename, Files sorted by Class, Duplicate Files and Archive Contents
- * Allows you to create easy-to-work-with groups of volumes
- * Expensive looking '3D metallic' windows
- * Ability to catalog the contents of ARJ, ZIP, LZH, ZOO, PAK and ARC archives
- * Ability to export the catalog to a dBase compatible databasefile.
- * WizCat/PRO can automatically label your floppy-disks

These free utilities are included in the WizCat/PRO package :

- * **WOODLE** : a graphic disklabel print utility with WYSIWYG layout editor
- * **WizCat/unZIP** : unpacks (extracts) ZIP and ARJ archive files
- * **WizCat/MC** : utility to search for files in multiple catalogs
- * **WizCat/DIZ** : extracts FILE_ID.DIZ filedescriptions from ARJ and ZIP archive files



Hints and Tips



Disk caching

WizCat's archive-scan functions result in quite a bit of I/O on your disks. Use a disk caching utility like SmartDrive (preferably the one that comes with DOS 6.2, as this one also supports CD-caching) or HyperDisk ; this will improve WizCat's (and any other application's) performance considerably.



Catalog backups

When you save a catalog, WizCat first renames the original catalog file to *.BCK, and then creates a new *.CAT file that contains all updates.

Please note that, according to Murphy's Law, a backup is something you'll never need unless you don't have it. So never erase the *.BCK files...

If something happens to the *.CAT file, you can simply rename the *.BCK file to *.CAT and continue using that catalog.



Program limits

Maximum nr. of :

Files on a volume	65,535	
Folders on a volume	5,000	
Volumes in a catalog	2,000	
Files in a catalog	40,000 up to 100,000	no hard limit, but a recommended maximum depending on available storage ; see ' Catalog Size Limits' below
Files displayed on File List window	8,000	
Files displayed on Archive List window	2,000	
Volumes displayed on Volume List	2,000	



Catalog size limits

WizCat must be able to read an entire catalog into your PC's memory.

This theoretically limits the size of the biggest catalog WizCat can handle to the amount of memory your system has available (you can check that on WizCat's Statistics window).

However, WizCat will never be able to use ALL available memory for its catalog, as some memory must remain available for displaying windows, the Window's system routines, applications you want to run at the same time as WizCat etc.

My rule of thumb : don't create a catalog that's bigger than half the amount of **real** memory that's available.

WizCat needs approximately 500 KB memory for every 10,000 files in a catalog, so, if your system has 4 MB memory you can let WizCat use 2 MB of it, and create catalogs that contain up to 40,000 files.

You'll notice that, when you're pushing WizCat to the limits, the entire Windows system will slow down because Windows has to perform a lot of memory management (i.e. swapping memory to and from its swapfile), and that you might get messages like 'Insufficient memory to run application' when starting another program while running WizCat.

Another thing to take into consideration : the bigger a catalog, the longer the reading,saving, searching and especially sorting will take.

The time necessary to read,save or search a catalog increases linear with the size of the catalog.

However, the time that WizCat needs to sort its catalog increases almost exponentially with the number of entries to sort.

Sorting is being performed by the 'Import', 'Compare', 'Print files sorted' and 'Print duplicate file' functions.

If you have a rather big catalog, and want to execute one of these functions, consider selecting a group of volumes first ; this limits the number of entries to sort, and therefore speeds up things.

Please note :

WizCat has been tested with catalogs that contained up to 100,000 files ; the author cannot guarantee WizCat's proper operation when using catalogs that exceed this size. The use of catalogs that exceed this size is formally not supported, and at the user's own risk.



WizCat/PRO Accessories & Titbits

A few useful Windows programs which work great in combination with WizCat/PRO :



Programmers' File Editor (PFE)

Author : Alan Phillips (United Kingdom)
Shareware ; no registration fee, it' s free !

"Programmer's File Editor (PFE) is a large-capacity text file editor for Windows 3.1, Windows For Workgroups 3.1, and Windows/NT. It is oriented towards those who use Windows as their program development environment, and so incorporates many features that make it a convenient work management system."

Because of all it' s features and it' s ability to handle large files PFE is the perfect editor to use in combination with WizCat/PRO, for instance for viewing output created by the Print Report function.



WinZip

Author : Nico Mak Computing, Inc. (USA)
Shareware ; registration-fee approx. US\$ 20

"WinZip brings the convenience of Windows to the use of ZIP, LZH, ARJ, and ARC files. It features an intuitive point and click interface for viewing, running, extracting, adding, deleting, and testing files in archives. Optional virus scanning support is included."

WinZip is the perfect de-archiver for use with WizCat/PRO ; you can simply drag an archive file from the File List window to WinZip to unpack it.



ToolBar

Author : Juan M. Aguirregabiria (Spain)
Shareware ; no registration fee, it' s free !

You can use Toolbar as a companion to the File List window ; it allows you to define a small

window, which shows buttons for the most frequently used applications. By dragging a file entry from the File List window to one of these buttons, you can instantly start the corresponding application, which opens the selected file.



Drag and View (DV)

Author : Dan Baumbach, Canyon Software (USA)
Shareware ; registration-fee approx. US\$ 20

"Drag And View can view the files created by popular word processors, databases, spreadsheets and graphic programs in their native format or a format close enough to your native format that you can easily see what the file contains without unreadable formatting codes. You can also view any file in plain ASCII or hexadecimal format. Drag And View allows you to open multiple windows so you can easily compare files. You can search for text in any file or a hexadecimal string in the Hex viewer. You can also go to any cell in a spreadsheet, any record in a database and any address in the hexadecimal view of a file."

Which makes Drag and View a perfect tool in combination with WizCat/PRO ; simply drag a file from the File List window to the Drag and View icon to have a peek at it.

The above programs are available on most Windows BBSes, CompuServe and America Online services and Windows Shareware CD' s. Please note that these programs are distributed as Shareware, and may require separate payment to their author.



Acknowledgments

WizCat/unZIP and WizCat/DIZ make use of unzip- and unarj-code developed by



Christian Ghisler, Bolligen, Switzerland

For translating WizCat's menus and help-messages into French (at an amazing speed !), the author wishes to thank



Jean-Luc Heusdain, Bruxelles, Belgium

The cat-icon (see WizCat's built-in icons on the Program Properties window) was created especially and exclusively for WizCat by



Bill Davis, Meadowbrook, CA

WizCat's 'Reading Catalog' speedometer is an adapted version of a nifty little program called METER.PAS, which was published by the godfather of Windows programming, the one and only Mr.



Doug Overmyer

Code for determining the contents of ZIP, ZOO, PAK and ARC archives is based on sourcecode from the program PIBCAT, which was created by :



Phil Burns

Code for determining the contents of ARJ archives is based on sourcecode from the program ARJDATE, which was created by :



Darren Lyon

Code for determining the contents of LZH archives is based on sourcecode from the program LZHTV10, which was created by :



Samuel H. Smith, Phoenix, AZ

The little cat with the slight weight-problem and the serious attitude-problem bears a striking resemblance with Garfield, who was created by :



Jim Davis (copyright United Features Syndicate, Inc.)

WizCat makes use of a virus protection routine developed by



Nick Wallbridge / Trevor Prinn, Babbacombe Computers Ltd.

For making it possible to create WizCat/PRO and to build up a body like Arnold Schwarzenegger (by giving me the Turbo Pascal for Windows Bible, which is about 1000 pages or 25 kg Windows techtalk), the author wishes to thank the Supreme SysOp of ClipBoard BBS, renowned for his *slik*
AAAARRGHH! -hehehehe...- toontalk and his 'briljant' brainwaves, the one and only (thank God for that...)



Peter -The ClipDude- Jansen ;-)



WizCat/PRO vs. Papparazzi



"WinCat/PRO 4.1 - il supercatalogo !"

"Il piú grande, completo, famoso ed efficiente catalogatore di floppy disk mai visto nel circuito shareware si rinnova e diventa anche il piú bello !"

If your Italian is a bit rusty : it means "WizCat/PRO 4.1 - the supercatalog ! The biggest, completest, most efficient and most famous cataloger in the shareware scene improves itself and now also becomes the most beautiful !"

Italian SOFTonLine, March '95



"Excellent : well designed, powerful features !"

PC Home, March '95



"Great cataloguer !"

CT Magazin für Computertechnik, December ' 94



Shareware of the Month

PC Praxis, October ' 94



"Far superior to everything else !"

Bits & PC' s, June '94



Superior Shareware

US Windows Magazine, May '94



"Top quality ; simply fantastic !"

Modem Magazine, February '94



"Like a cheetah : fast and elegant !"

Dutch PD/SW/FW NewsLetter, January '94



Shareware of the Month

German WIN Magazine, November '93



"Excellent cataloguer !"

UK PC-Plus, October '93



"Organise, find and restore files with ease !"

UK Computer Shopper, August '93 disk



System Requirements

In order to run properly, WizCat/PRO requires



Microsoft Windows 3.1, Windows for Workgroups 3.11 or Windows 95



at least 4 MB memory (8 MB or more recommended)



at least 2 MB space on your harddisk



at least 1 diskdrive, harddisk or CD-ROM drive

Recommended :



Mouse or other pointing device



WinZip ((c) Nico Mak Computing, Inc.) for extracting archive files

Optional :



if you want to print disklabels : a printer capable of printing graphics



Installing WizCat/PRO

The easiest (and recommended) way to install WizCat is to run the INSTALL.EXE program.

The installation program will ask you in which folder WizCat/PRO should be installed ; as a default this is C:\WIZCAT.

Specify in which folder you want to install WizCat/PRO and click OK ; the installation program will proceed with :

1. creating the specified folder (if it doesn't exist already)
2. creating folders \CATALOGS and \ARCHIVES (See also [Cataloging Archive Contents](#))
3. installing all WizCat files in the specified folder
4. installing file CTL3DV2.DLL in the \WINDOWS\SYSTEM folder

Next the installation program will create a program group for WizCat/PRO.

Group WIZCAT will be defined to the Windows Program Manager, and the WizCat/PRO and WOODLE programs will be defined in it.

Now the installation is complete.

Open the WIZCAT group that has been defined to Program Manager, and start WizCat/PRO by clicking its icon.

Click the 'Catalog' menu on WizCat's primary window, and then select 'Open Catalog...'. The 'Open' dialog will show 1 catalog file, SAMPLE.CAT.

Select file SAMPLE.CAT and click OK. After WizCat has read this file you can have a first look at WizCat/PRO 4.2 !

Select file SAMPLE.CAT and click OK. After WizCat has read this file you can have a first look at WizCat/PRO 4.2 !

Once you've tried WizCat you can delete the SAMPLE.CAT, and create your own catalog : click the FILE menu, select 'Open Catalog...' and, on the 'Open Catalog' dialog enter the name of the catalog you want to create, for instance WINDOWS.CAT.

Note that the filename-extension of catalogs must be '.CAT'.

MANUAL INSTALLATION

If you do not want to use the automatic installation procedure, you can install WizCat this way.

- 1) create folder C:\WIZCAT
- 2) create folders C:\WIZCAT\CATALOGS and C:\WIZCAT\ARCHIVES
- 3) copy the installation files to the C:\WIZCAT folder
- 4) rename file INSTALL.BIN to INSTALL.ZIP
- 5) extract INSTALL.ZIP into C:\WIZCAT (using PKUNZIP or WinZip)
- 6) move file CTL3DV2.DLL to the \WINDOWS\SYSTEM folder
- 7) add WIZCAT.EXE and WOODLE.EXE to a Windows program group
(specify C:\WIZCAT as 'working directory')
- 8) GO!



Uninstalling WizCat/PRO

To remove WizCat/PRO from your system :

- erase all files in folder C:\WIZCAT
- erase all files in folder C:\WIZCAT\ARCHIVES
- remove folders C:\WIZCAT, C:\WIZCAT\CATALOGS and C:\ WIZCAT\ARCHIVES
- erase file WIZCAT.INI in the WINDOWS folder

WizCat does not alter or add entries to the Windows configuration files WIN.INI or SYSTEM.INI



What's new in WizCat/PRO 4.2

General

* WizCat/PRO has been updated to support the peculiarities of Windows 95. However, the program runs in 16-bit mode in order to remain compatible with Windows 3.1/3.11.

When you use Windows 95 WizCat/PRO also supports long filenames (see also [About Windows 95 Long Filenames](#))

Work with File window

* The new Work with File window replaces the Restore and Associate windows.

On this window you can define your favorite programs to WizCat. Then, with a simple double-click on its icon you can run the program, and then it immediately opens the file you're working with.

Volume List window

* The 'Exit' button has been replaced with an 'Open Catalog' button.

* New function on the 'Files' menu : Duplicate Files. Use this function to display all files that occur more than once in the catalog.

File List window

* A double-click on a file listed on the File List window will instantly run the program that has a

Windows-defined association with that file. If there is no association defined, or if the associated program is unable to open the file, the 'Work with File' window will be shown instead.

Recatalog window

* When updating a disk in the catalog, this window will accurately show (and optionally print) all files that have been added, deleted, updated or regressed. This information can be used to see the changes that occurred when installing new software.

Search File window

* You can now specify multiple arguments using and/or/not operators on the Filename, Folder and Comment fields.

* The Index displays a list of all words that occur in comment-entries.

Statistics window

* In order to support the increasing capacity of harddisks the Statistics window now is able to show 'used space' values up to 2 terabytes.

Change Volume Icon window

* Just a bit bigger.

Report window

* New report : files sorted by class.

New in WOODLE 2.2 :

* A label's width and height can now be reduced to 2.40" (69.4 mm) in order to support 70x70 mm labels.



What's new in WinCat/PRO 4.1

WinCat/PRO 4.1 is primarily a maintenance release ; a few minor bugs have been resolved and there have been some cosmetic changes in the software and documentation. The 4.1 package also includes updated versions of Woodle, WinCat/MC, WinCat/DIZ and WinCat/unZIP.

General

- * All listboxes that still used the nonproportional Terminal font for displaying text (for instance on the Archive Contents and Statistics windows) have been changed and now use the esthetically more pleasing proportional Arial font.
- * In order to avoid out-of-memory problems WinCat now inhibits starting a second copy of the program. And uhhh... let's face it, you only pay for one copy ! ;-)

File List window

- * Entries on this window can now also be sorted by description.

Folder List window

- * Now also shows the last modification-date of each directory.
- * The treelist display has been enhanced to look more like the Windows FileManager display.

Archive Contents window

- * Now shows an icon for each file in the archive.

Statistics window

- * The FileTypes function (showing statistics on all extensions) has been redesigned and now works a lot faster.



What's new in WinCat/PRO 4.0

General

- * WinCat now uses 'tabcard' displays (like those in for instance Excel 5.0 and Word 6.0).
- * WinCat/PRO 4.0 has been tested with the Beta-2 version of Microsoft Chicago (Windows 95). However, because the official version of Chicago was not available when WinCat/PRO 4.0 was released, there's no guarantee that WinCat/PRO 4.0 will work properly when running Chicago.
- * WinCat's memory-management has been significantly enhanced by implementing **VROOMM** (ViRTual Object Oriented Memory Management) routines ; as a result, WinCat uses less memory when loading a catalog. This in turn reduces Windows' memory-swapping, which enhances WinCat's performance significantly. WinCat's reduced memory requirements also enable you to create bigger catalogs.
- * **WARNING** : if you save a catalog with the new WinCat/PRO 4.0, you cannot load that catalog anymore with a previous release of WinCat !

Volume List window

- * The maximum number of volumes that can be displayed on this window has been increased from 1000 to 2000 (this is also the maximum number of volumes in a catalog).

File List window

- * Now supports **drag&drop** ; this means you can 'drag' an entry from the File List window to another application. For instance, you can drag a ZIP file to an unzip tool, drag a text-file to an editor to edit it, drag a file to a 'trashcan' to delete it, etc.
- * The maximum number of files that can be displayed on the File List window has been increased from 5000 to 8000.

Archive File List window

- * The maximum number of files that can be displayed on this window has been increased from 1000 to 2000.

Directory List window

- * You can now also print a disk's directory list (to a file or directly to the printer) using the Print button on this window.
- * The full pathname of the selected directory entry is now displayed at the bottom of this window.
- * The maximum number of directories that can be displayed on this window has been increased from 3000 to 5000.

Volume Information window

- * You can now reset a volume's icon to the default one using the 'Reset Icon' button

on the Extra' s tab.

File Information window

* Now supports **file-descriptions of up to 500 characters in length**. When importing file-descriptions (with the IMPORT function, or by reading 4DOS description files or files.bbs files) WinCat makes use of these extended-length fields.

* **Copy, Cut, Select and Paste buttons** make it easier to edit file-descriptions.

WARNING : due to the increased size of file-description fields, the structure of the catalog has changed. This means that if you save a catalog with the new WinCat/PRO 4.0, you cannot load that catalog anymore with a previous release of WinCat !

Note : as a result of the new catalog structure, a catalog' s size may decrease by up to 10% when saved with WinCat/PRO 4.0

Search Files window

* You can now search for files that were created or modified within a specific date-range.

* An **easy-to-use calendar** simplifies selecting search-for dates ; this calendar even understands you when you mumble things like ' from 2 weeks ago until last Tuesday' .
!

* In the ongoing effort to boldly go where no cat has gone before, the eggheads which work day and night in the WinCat Research Centre (an Authorized Personnel Only area, deep down in the basement of the WinCat International Inc. building) have once again surpassed modern technology -as we know it- by developing a sophisticated pattern-analysis algorithm (based on Boyer-Moore), which provides text-search capabilities at a speed good enough for a nr. 1 Oscar-nomination (category 'Best Performing Cat') plus a nr. 2 nomination in the category 'Must-Have Pussy' (nr. 1 nominee being Sharon Stone, of course).

Catalog Disk window

* In addition to scanning 4DOS description files for file-descriptions, WinCat now also **automatically scans FILES.BBS files**.

* The maximum number of directories on a volume has been increased from 3000 to 5000.

Statistics window

* Can now display additional statistical information :

History : summary of all files by year of creation

Classes : summary of all files by function class

Filetypes : summary of all filetypes (filename-extensions)

Double-clicking an entry on these lists will display the File List window, showing all applicable files.

Import window

* The Import function now supports **multiple-line filedescriptions**.

* When importing CompuServe *.CAT listings, WinCat now copies the entire file-description (following the Title and Keywords lines) to it' s catalog.

* You can now let WinCat automatically remove all special ASCII characters (i.e. ASCII-codes < 32 and > 165) from the imported text.

* You can optionally limit importing to one or more function-classes.

Export window

* Filenames are now split into a FILE field (the filename) and a TYPE field (filename-extension).

* You can optionally limit exporting to one or more function-classes.

Print Reports window

* The ' Report...' menu-options have been replaced by a ' Reports' window ; on this window you can select the type of report to be printed and the fields to be included on the report.

You can also (optionally) limit the files listed on the report to those that belong to one or more function-classes (i.e. only Archives and Programs).

New in WOODLE 2.0 :

* On the ' Label Properties' window you can specify whether or not a ' write enabled / protected' icon is to be printed on the labels' backflap.

* Text in textobjects will be shifted slightly to the right of the objects' borderline.

* When using precut sheets (like Avery), it can happen that some labels are missing because the sheet has been used before ; to enable you to use these sheets, WOODLE will now display a window where you can define which labels are missing. WOODLE will skip those positions when printing the labels.



What's new in WinCat/PRO 3.4

General

* When starting WinCat 3.4 for the first time, WinCat will check if there's already a WINCAT.INI (made by a prior WinCat release) present in the Windows folder. If so, WinCat will rename this file to WINCAT.OLD, and create a new, restructured WINCAT.INI file.

* WinCat/PRO no longer needs the Turbo Pascal runtime library BWCC.DLL, so this file has been removed from the WinCat package.

* The WinCat 2.x catalog conversion program CONVERT.EXE has been removed from the WinCat package.

* WinCat Help now shows pictures of WinCat's main windows. On these pictures you can click any field to get a description of its meaning or function.

* The Volume List and File List windows now display a short description of a button's or menu's function if you select it ; these descriptions can be displayed in either the [English, French, German or Dutch language](#).

* New files in the WinCat package :

WINCATBT.DLL Graphic routines DLL, used by WinCat and WOODLE

WINCATIC.DLL Sample icons for use with the new 'Change Volume Icon' function

VENDOR.DOC Information for disk vendors and shareware distributors who wish to distribute WinCat/PRO (see also the Vendor Information section in this help file)

* **WARNING** : If you make use of the new 'Change Volume Icon' function and save the catalog, you cannot load that catalog anymore with a previous release of WinCat !

Options menu

* Main improvement in the 3.4 release is that WinCat now uses [superb 3D graphics](#) to display volumes, files and directories.

You can customize how you want the volume-list, (archive)file-list and directory-list windows displayed, using the new [Customize Window](#) options on the Options menu. For each of these windows you can choose between five display modes, ranging from out-of-this-world-3D to plain dull. Of course you can also customize the font and color used for displaying text, and the window's background color.

* New options on the [Configure](#) menu :

- Program to execute when clicking the WUNA button on the Restore File window
- Program to execute when clicking the WinZip button on the Restore File window

* The '[Language](#)' option allows you to select in which language menu's, pop-up-menu's and help-messages should be displayed ; you can choose from English, French, German or Dutch.

Volume menu

* New option : [Change Volume Icon](#) ; with this function you can change a volume's

icon, to be displayed on the Volume List window.

WARNING : If you make use of this function and save the catalog, you cannot load that catalog anymore with a previous release of WinCat !

Volume List window

* Clicking the right mouse-button will display a **pop-up-menu**, where you can select a function to perform on the selected volume.

File List window

* The Page-Up and Page-Down menu options have been removed ; WinCat can now show up to 5000 entries at once on this list.

* Clicking the right mouse-button will display a **pop-up-menu**, where you can select a function to perform on the selected file.

* In the continuous endeavor to boldly go where no cat has gone before, the technofreaks at the R&D department of WinCat International Inc. have crossed the boundaries of modern technology, by developing the amazingly ingenious, highly efficient **SPLLASH feature** (Single-Pass Linklist LookAside with Secondlevel Hashing) (TM and HEAVY (C)), which provides sorting capabilities at a speed fast enough to catch up with the Starship Enterprise cruising at Warp Factor 11, and while passing it make Dr. McCoy speak the historic words 'Damn it Jim, it's a cat, but NOT as we know it !'.

Directory List window

* WinCat now also retains the position and size of this window.

Catalog Disk window

* Now reads all **DESCRIPT.ION** files on a disk if you enable the 'Read 4DOS descript.ion file' option on the Configure window ; prior WinCat releases only looked for a descript.ion file in the root directory.

* WinCat now scans subdirectories up to 6 levels deep.

* Now supports **PKZIP version 2 archives** and **multi-volume ZIP and ARJ archives** (with filename-extension A01-A09) ; WinCat will catalog the contents of these archives if you enable the 'Catalog Archive Contents' option on the Configure window.

New in WOODLE 1.1 :

* The format of the WOODLE.CFG configuration file has changed ; therefore WOODLE 1.1 cannot use a WOODLE.CFG file created with WOODLE 1.0

* Page-layouts are now specified for each individual label-layout.

* In order to enable you to use Avery #5196 labels, WOODLE can now print labels 3 columns wide on a page.

* Label- and object-borders can now be defined to have rounded corners.

* Labels can now be printed without a border (for instance when using precut labels). This because some users complained they got depressed by WOODLE's square labels with black borderline...

* You can now also print 4.75" x 1.2" labels for 5.25" disks.

* A label's width and height can now be adjusted, so you can make it fit on precut labels with a nonstandard size.



Bugs Fixed

Summary of bugs that were reported in WinCat/PRO 4.1, and that have been eliminated in WizCat/PRO 4.2 if possible :

PRB0053

Symptom Runtime error in UNIDRV.DLL when printing labels with WOODLE
Occurs ???
Cause ???
Status open

PRB0061

Symptom Incorrect 'free space' and 'used space' values on Statistics window if they exceed 2 gigabytes. Now supports values up to 2 terabytes (that's a whopping 2 million Megs, folks)
Status fixed 02-02-95

PRB0062

Symptom 'Free space' value on Volume List window truncated if it exceeds 999.9 megabytes
Status fixed 02-02-95

PRB0063

Symptom Network-drive icon instead of CD-drive icon displayed on Drive Select window if drive empty or contains audio CD
Status fixed 22-02-95

PRB0064

Symptom WinCat/MC : 'Copy File' function doesn't work
Status fixed 18-02-95

PRB0065

Symptom Static text fields show wrong background color on Calendar window
Status fixed 23-04-96

PRB0066

Symptom Some listboxes show wrong background color
Status fixed 23-04-96

PRB0067

Symptom Runtime error 202 when using Windows 95
Status fixed 23-04-96

PRB0068

Symptom Volume Information window shows wrong disktypes when using Windows 95
Status fixed 23-04-96

PRB0069

Symptom Volume Information window shows negative number of files if disk contains more than 32,767 files
Status fixed 01-05-96

PRB0070

Symptom WOODLE causes GPF in GDI.EXE when loading a bitmap
Status fixed 16-05-96

These bugs were fixed in WinCat/PRO 4.1 :

- PRB0055** Runtime error at 0001:6367 in WOODLE when switching applications
- PRB0056** WOODLE doesn't skip labels on left side of paper
- PRB0057** WinCat/MC : printbutton on Archive Contents window not working
- PRB0058** WinCat/MC : search by 'date after' returns incorrect results
- PRN0059** WinCat/unZIP : wrong directory used as target when selecting it from drop-down box
- PRN0060** Displaying all files with a particular one- or two-character extension doesn't work right when using the FileTypes option on the Statistics window

These bugs were fixed in WinCat/PRO 4.0 :

- PRB0051** Not all file-descriptions imported when reading 4DOS descript.ion files
- PRB0052** WinCat ' hangs' when scanning 4DOS descript.ion files
- PRB0054** ' &' character in comments and filenames displayed as underscore

These bugs were fixed in WinCat/PRO 3.4 :

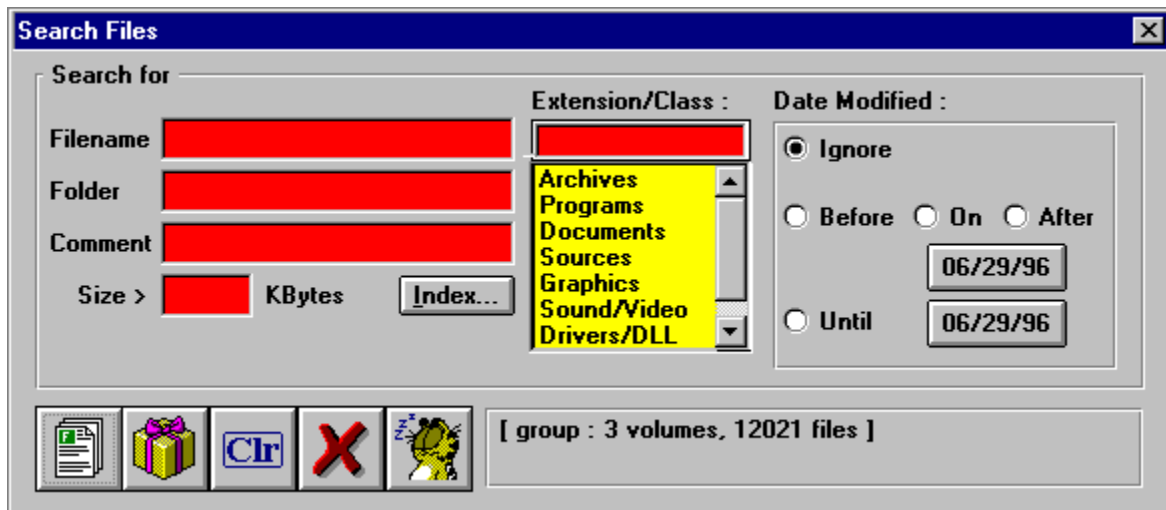
- PRB0041** 'Retry/Cancel' message when opening Drive Select window.
- PRB0042** WinCat's displays look chaotic ; list headers cover items on listbox, 'used space'-bar on Volume Information window at wrong position, etc.
- PRB0043** Volume Information window shows wrong 'used space' value for CD's (always 134.2 MB)
- PRB0045** Catalog Statistics window shows negative used and/or free space values.
- PRB0046** Pressing 'Select Group' button after an empty group was selected results in message 'First select volume on Volume List window'
- PRB0047** After letting WinCat write a volume-label on a disk, it's impossible to catalog another disk ; message 'retry/cancel' appears when clicking drive button on Drive Select window, or info from previous disk shows up again.
- PRB0048** Static text fields show gray instead of user-defined window background color.
- PRB0049** At times, nothing happens when clicking the 'Open Catalog' option on the 'Catalog' menu.
- PRB0050** Invalid function calls when running WinCat and WOODLE.



Search Files window

Using the Search Files window you can search for files in the catalog (by clicking the FILES button on the left), or for files in archives (by clicking the ARCHIVES button, on the right of the FILES button).

Click on any field or button to get a description of its function :



Some examples on how to use this window :

Find all files that have characterstring **ICO** in their filename :

Filename : **ico**

Find all **BMP** files :

Extension : **bmp**

Find all executable files in the Windows folder :

Extension : **Programs** (selected from drop-down list)

Folder : **windows**

Find all archive files that are bigger than 300 Kbytes :

Extension : **Archives**

Size : **300**

Find all files that have been created or updated between April 1, 1996 and May 15, 1996 :

1. click the 'Date' button ; use the calendar to set the date to April 1, 1996 and click OK

2. click the 'Until' button ; set the date to May 15, 1996 and click OK

3. select the 'Until' option

4. click the 'Search Files' button.

Find all graphic files that are older than Februari 10, 1995 :

1. click the 'Date' button ; use the calendar to set the date to Februari 10, 1995

2. select the 'Before' option

3. select class Graphics

4. click the 'Search Files' button.

On the Filename, Folder and Comment fields you can specify multiple arguments, which you can combine using AND or NOT operators.

Find all files that have characterstring **ICO** or **BMP** in their filename :

Filename : **ico bmp**

Find all files that have the words **DISK** or **FILE**, but not the word **COPY** in their comment-field ;

Comment : **disk file -copy** (preceding a string with a minus sign means NOT)

Find all files that have the word **FILE** and **MANAGER** in their comment field :

Comment : **file +manager** (preceding a string with a plus sign means AND)



WizCat does NOT support DOS-like wildcards ; entering something like *.CAT on the Filename field will result in '0 files found'.

Index

Click this button to display the Index window.

This window shows a list of all words that occur in comment-entries. You can use this list in two ways :

- double-clicking a word will display the File List window, showing all files that have the selected word in their comment-field
- pressing the 'Add word to search' button will add the selected word to the Comment field on the Search Files window



Depending on the size of your catalog and the amount of text used for documenting files building the index can take quite some time. Fortunately there's an easy solution to this problem : get yourself a fast Pentium processor...

Enter string(s) to search for

To search for files in the catalog (or files in archives) you must enter the character-string(s) you want WizCat to look for on the Filename, Extension, Folder and/or Comment fields. WizCat will compare the strings you enter with the corresponding fields of all file-entries in the catalog, and show the files that match.

On the Filename, Folder and Comment field you can use multiple search-arguments with AND, OR or NOT operators.

Search for Function Class

By selecting one of the entries displayed on this list, you can search for files that belong to the selected Function Class. For instance, if you select class 'Programs' WizCat will search for files with filename-extensions EXE, COM, BAT or PIF.



You can customize the predefined classes ; see [View](#)

Search Files

Click this button to search the catalog for files that match the selection criteria.

Before clicking this button, enter at least one argument on the Filename, Extension, Folder, Comment or Size field, or select Search by Date.

Search Files in Archives

Click this button to search for files within archive-files (like ARJ and ZIP).

Before clicking this button, enter at least one argument on the Filename, Extension or Size field, or select Search by Date.



The Comment and Folder fields cannot be used to search for files in archives.

Clear Fields

Click this button to clear all search fields.

Cancel

Click this button to close the window.

Status Information

This line shows the number of volumes in the currently selected group (see also [Select Volume Group](#)), and the total number of files on those volumes.

Set Date button

Clicking this button will display a calendar on which you can set the date to search for. To activate searching by date you must enable either the **Before**, **On** or **After** checkbox.

If you do not want to search for files by date you must set the **Ignore Date** option.

Search by size

Use this field to search for files that exceed a given size.

If you enter 100, WizCat will display all files that are bigger than 100 KBytes.

Search File by Date

If you want to look for files by date, you must set either the **Before**, **On** or **After** option :

Before : search for files older than the selected date

On : search for files that were created or modified on the selected date

After : search for files newer than the selected date

To set the required date, click the button that's located immediately below these checkboxes ; this will display a calendar on which you can set the date.

To disable searching for files by date you must set the **Ignore Date** option.

Set Date Until

To make WizCat search for files that were modified in a given period of time (e.g. between January 1 and April 30) you must set the **Until** option ; next define the starting and ending dates using the **Date From** and **Date Until** buttons.



Rename Volume window

On this window you can change the ID of a volume in the catalog. The new ID you enter must be unique ; if there is already a volume cataloged with the new ID, a messagebox appears prompting you to enter a different ID.

Note that WizCat only changes the volume-id in the catalog ; it does NOT change the disklabel on the disk.



Catalog Disk window

When you select a drive on the Select Drive window, WizCat scans the folder of that disk and displays the Catalog Disk window, which shows the contents of the disk.

On this window you must enter a volume-ID for the disk to be cataloged. This ID may be 1 to 11 characters long, and must comply with the DOS naming conventions ; therefore, you can not use these characters : * ? / | . ; : = [] () & ^ < > "

If the disk was labeled, the ID-field will show the label. You're free to change it : WizCat doesn't *require* that disklabel and (external) volume-ID are equal.

However, the easiest way to work with WizCat is to give every disk a unique label, and then let WizCat use these labels as volume-ID's.

Therefore the Catalog Disk window also has a 'write changed volume-id to disk' option : if you select this option, WizCat will automatically (re)write a floppydisk's label if you alter the volume-id.

When you click OK, WizCat will scan the catalog to see if the volume-ID you entered is already in use. If it isn't, the volume- and file-information will be added to the catalog.

If there IS a volume with the same ID in the catalog, WizCat's action depends on the setting of the 'Display Recatalog Window' option.

If this option is turned on, WizCat will display the Recatalog Disk window where you must either confirm or cancel the recatalog operation ; else WizCat will automatically recatalog the disk.

Recataloging means that WizCat will delete the old volume (and its files) from the catalog and add the new volume- and file-information to the catalog. Volume- and file-comments will be copied from the old to the new volume- and file-records.

After WizCat has added or replaced the volume in the catalog, he will optionally continue with :

1. scanning the DESCRIPT.ION files on the disk
2. scanning the archive-files on the disk
3. displaying the Volume Information window, where you can enter a description for the disk.

Whether or not WizCat performs these actions depends on the the setting of the appropriate options on the 'Catalog Disk' and 'Configure' Configure windows.



Erase Disk

Clicking the 'Erase Disk' button on the Volume List window will delete the selected volume (and all files cataloged on it) from the catalog.

If there is a corresponding archive contents (.ACT) file this will be deleted as well.

Of course you'll receive the inevitable prompt 'are you sure ?'.



Recatalog Disk window

After clicking OK on the Catalog Disk window, WizCat will check whether the Volume-ID you entered is already in use.

If there IS a volume with the same ID in the catalog, WizCat will display the 'Recatalog Disk' window.

This window compares the information that's already in the catalog with the actual contents of the disk to be cataloged and displays the differences between them :

- files that are on the disk, but not yet cataloged
- files that are cataloged, but can't be found on the disk
- files on the disk that are newer than the ones cataloged
- files on the disk that are older than the ones cataloged

If you click the OK button, WizCat will return to the 'Catalog Disk' window and recatalog the disk.

This means that WizCat will delete the old volume (and its files) from the catalog and add the new volume- and file-information to the catalog. Volume- and file-comments will be copied from the old to the new volume- and file-records.

If you click the Cancel button, WizCat will return to the 'Catalog Disk' window, where you can either enter a different volume-id, or cancel the catalog function.

Remember that this window doesn't appear if you have turned the 'Display Recatalog window'

option (on the Catalog Disk window) off. In this case WizCat automatically recatalogs the volume.



Drive Select window

When you click the 'Add Disk' button on the Volume List window to catalog a disk, WizCat first displays the Drive Select window, which shows a button and an icon for each floppydisk-, harddisk- or CD-ROM-drive installed on your PC, and (if your workstation is connected to a LAN) the network-drives that are accessible.

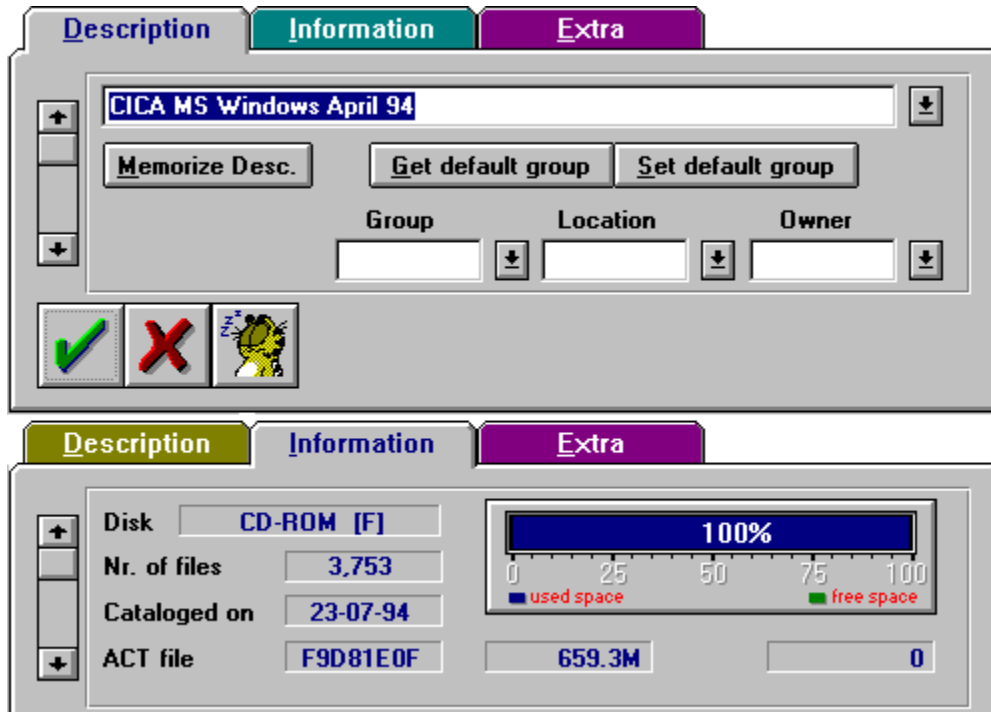
Insert a disk in a drive (if applicable) and then select this drive by clicking the appropriate drive-button.

After scanning the directory of the disk WizCat will continue by displaying the Catalog Disk window, which shows the contents of the disk.



Volume Information window

The Volume Information window displays relevant data about the selected disk. Click on any field or button to get a description of its function :



Scrollbar

Use the scrollbar to quickly scroll to another volume. If you do this, any updates you made on the Description or Group fields will be saved automatically.

Disk Type

Shows what kind of disk this is (e.g. 3.5" 1.44 MB, CD-Rom, harddisk etc.)

Number of files

This is the total number of files on this disk.

Date

The date this disk was cataloged.

Archive Contents file

The filename of the archive contents file associated with this disk (applicable only if the contents of archive files on this disk were cataloged).

Used and free disk space

Shows the amount of used and free disk space on this disk, in nnnK (K=1,000) or nnn.nM (M=1,000,000) bytes.

The 'stuffometer' shows the

- amount of used space in blue
- amount of free space in green
- used space in percent of the disk's storage-capacity

Volume Description

On this field you can enter a description of the disk's contents.



To make it easier to enter a description for a series of related volumes (i.e. Windows Installation Disk 1 of 7, 2 of 7 etc.), you can use the [Memorize](#) button. Clicking this button will add the current volume description to the drop-down list ; after scrolling to another volume you can select that description again from the list.

Get/Set default group

To make it easier to enter the same Group, Location and Owner fields for a series of related volumes, you can use these buttons :

Set Default Group : save the current Group, Location and Owner fields.

Get Default Group : retrieves the previously saved Group, Location and Owner fields

Group, Location and Owner fields

Here you can define to which group, location and/or owner a disk belongs. Each of these fields may be 1 to 8 characters long. You can enter new identifiers in the edit-boxes, or select existing identifiers from the drop-down lists.



Use the Set/Get Default Group buttons to quickly enter these fields for a series of related volumes.

OK button

Clicking this button will save the Description and Group fields in the catalog, and end the Volume Information window. The Volume List window will show the updated Group and Description fields.



Another way to save these fields is to scroll to another volume, using the scrollbar at the left. If you do this, all updates will be saved automatically, i.e. you don't have to click OK.

Cancel button

Clicking this button will end the Volume Information window. Any changes you made on the current disk's Description or Group fields will be discarded.

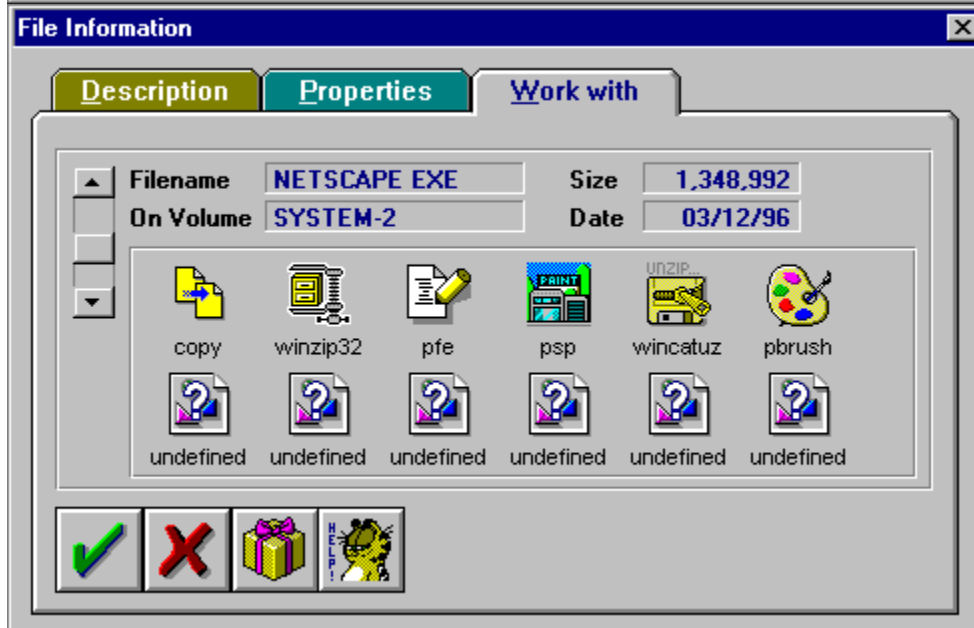
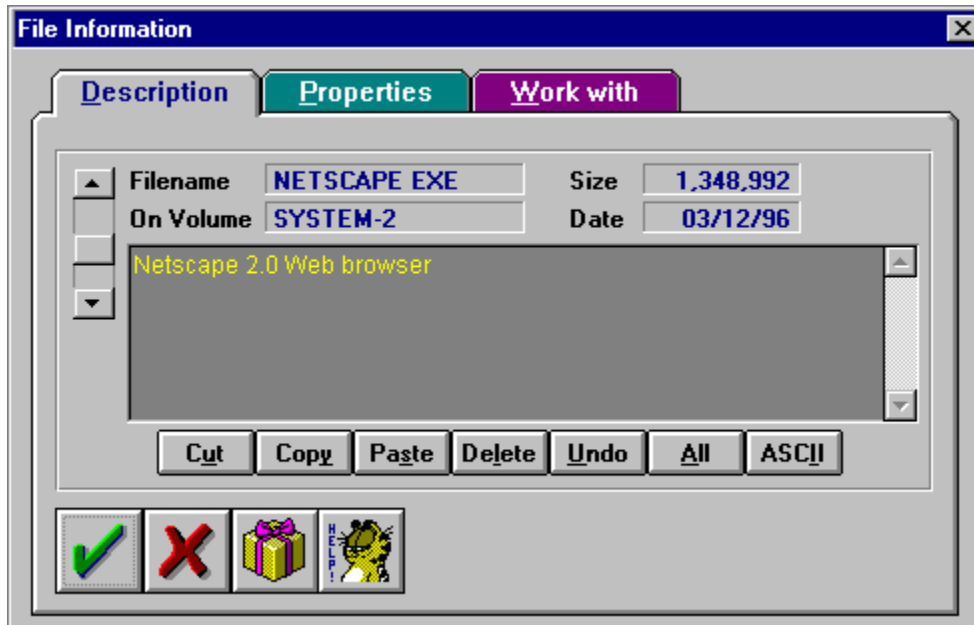


File Information window

The File Information window can be used to :

- show or update a file's description
- show the file's properties (like size, creationdate, folder etc.)
- work with a file

Click on any field or button to get a description of its function :



Scrollbar

Use the scrollbar to quickly scroll to another file. If you do this, any updates you made on the Description field will be saved automatically.

Date

The date this file was created or last modified.

Name

This is the name of the file.

Volume

The name of the disk that contains the file.

Size

The size of the file in bytes.

File Description

Here you can enter a description (of up to 500 characters) for this file.

After you updated this field you can

- click the Cancel button to discard any updates you made
- click the OK button to save the description in the catalog, and return to the File List window
- scroll to another file (using the scrollbar on the left) ; this will automatically save the updated file-description

Edit buttons

These buttons make it easier to edit the File Description field :

Cut Removes the selected text and places it on the clipboard

Copy Copies the selected text to the clipboard

Paste Inserts the text that's currently on the clipboard at the cursor position

Delete Removes the selected text

Undo Undo the last update

All Selects the entire text

Ascii Removes all special ascii characters (like graphics)

OK button

Click this button to save the updated description ; the File Information window will close and you'll return to the File List window.

Cancel button

Click this button to close the File Information window and return to the File List window ; any updates you made on the current File Description field will be discarded.

Archive Contents button

Click this button to show the contents of an archive file (like ARJ and ZIP) on the Archive Contents window.

Defined applications

By double-clicking any of these icons you can start the corresponding program ; that program will open the current file.



Click the right mouse-button on an icon to define a new program, or to change an existing definition.

Undefined applications

The 'broken file' icon either means that no program has been defined yet, or that the defined program doesn't exist anymore.

Click the right mouse-button on this icon to display a window where you can select a new program.



You cannot change the first icon ; it is reserved for the Copy File function.



Archive Contents window

This window shows the files in a particular archive file.

At the top of this window you can see :

- the size of the archive file itself
- the total uncompressed size of all files in the archive
- the number of files in the archive
- the last date any of the files in the archive was modified

You can print the contents of the selected archive file by clicking the Print button.



View

With the 'View' menu-option on the File List window you can limit the files displayed to those belonging to a certain 'function class', e.g. programs, documents, sourcefiles etc.

Each class represents one or more filename-extensions. For instance, to class 'Programs' belong all files that have extension EXE,COM,BAT or PIF.

WizCat can use up to 9 classes ; 8 of them have been predefined :

1: Archives	ARJ (plus A01 through A09),ZIP,LZH,PAK,ARC,ZOO,RAR
2: Programs	EXE,PIF,BAT,COM
3: Documents	DOC,TXT,WRI,INI,RTF,INF,HTM
4: Sources	PAS,RES,RC,H,C,ASM,BAS,DLG,FRM,MAK
5: Graphics	BMP,GIF,RLE,PCX,JPG,TGA,ICO,FLI,CDR,TIF,WPG
6: Sound/Video	WAV,ROL,VOC,MDI,MOD,SND,MID,AVI,MM,SNG
7: Drivers/DLL	DLL,DRV,SYS,386,VBX,VXD,CPL
8: Fonts	FON,FOT,TTF,FNT,ATM,PFB,PFM

You can customize these classes by defining them in WIZCAT.INI, section [Classes].
For example :

- You want to add extension 'TEX' to class 3, Documents :

```
[Classes]
:
Class_3=Documents,DOC,TXT,WRI,INI,RTF,INF,HTM,TEX
```

- You want to define class 9 as 'Excel', using extensions XLC,XLS,XLM,XLA and CHT :

```
[Classes]
:
Class_9=Excel,XLC,XLS,XLM,XLA,CHT
```



The extensions you define MUST be separated with ','. Don't enter any other characters in between. For each class you can define up to 20 extensions.



About Windows 95 Long Filenames

In DOS and Windows 3.1 the name of a file consists of an 8-character filename and a 3-character filename-extension.

In Windows 95 however you can give a file a much longer (and thus more meaningful) name of up to 250 characters.

Problem is that DOS and Windows 3.1 programs don't know how to handle these long filenames... so how does Windows 95 maintain compatibility with these programs ?

The solution is that Windows 95 stores two names for every file and subdirectory: a short name that's visible to all applications, and a long name that's visible only to Windows 95 applications.

Short filenames are stored in the familiar 8.3 format. Windows 95 creates a short filename from a long one by truncating it to six uppercase characters and adding "~1" to the end of the base filename.

If there's already another filename with the same first six characters, the number is incremented. The extension is kept the same, and any character that was illegal in earlier versions of Windows and DOS is replaced with an underscore.

For instance, file 'Portrait of an artist as a young man.doc' will be known by DOS and Windows 3.1 programs as 'PORTRA~1.DOC'

If you save another file named 'Portrait made by my artistic girlfriend.doc' in the same directory, this will get the short name 'PORTRA~2.DOC'

How does WizCat handle long filenames ?

In order to remain compatible with Windows 3.1/3.11 WizCat uses the short filename to identify a file ; the long filenames are stored as comment entries.

When you catalog a disk, WizCat will check whether a filename contains the ~ character (indicating that this file also has a long name). If that's the case, WizCat fetches the long filename and stores it in the file's comment field.

For example, the two .doc files mentioned above will be known by WizCat as

Filename	Comment
-----	-----
PORTRA~1.DOC	Portrait of an artist as a young man.doc
PORTRA~2.DOC	Portrait made by my artistic girlfriend.doc

Suppose only these two files exist in your catalog ; what would happen if you use the Search Files window to search for filename 'artist' ?

Normally WizCat wouldn't find any applicable files, because the filenames PORTRA~1 and PORTRA~2 do not contain the string 'artist'.

However, when WizCat sees the ~ character in a filename it knows it also has a long filename, which has been stored in the comment field. In this case WizCat also scans that field.

So, searching for filename 'artist' will have the same result as searching for comment 'artist' ; in both cases WizCat will find both the PORTRA~1 and PORTRA~2 files.



WizCat/PRO 4.2 does not use the long names of directories. For instance, directory \Program Files\Plus! will be known by WizCat as \PROGRA~1\PLUS!



Scanning 4DOS DESCRIPT.ION file

One of the nice features of 4DOS is that you can assign descriptions to your files. 4DOS saves these descriptions in -hidden- file(s) called 'DESCRIPT.ION'. These are 'plain' ASCII text files, i.e. their contents might look like this :

```
afile.exe just one of my files
wizcat42.arj SPLENDID program : I'm gonna mail the orderform today !
descript.ion This comment describes the volume contents
somefile.arj This is another file
```

When cataloging a disk, WizCat scans all folders of this disk for 'DESCRIPT.ION' files and, if found, copies the file-descriptions from these files to its catalog.

If there is an entry 'descript.ion' in the descript.ion file, WizCat will use its description as a volume-description (get my point ?).

If you don't want WizCat to read the DESCRIPT.ION files, disable the appropriate option on the Configure window.



Cataloging archive contents

You can optionally let WizCat catalog the contents of ARJ, ZIP, LZH, PAK, ZOO and ARC archive files.

When WizCat scans the archive files on a disk, he saves the contents-information in a special folder in a file named Fxxxxxxx.ACT, where xxxxxxx is some generated (timestamp) string. So, for every volume that WizCat scanned there is a .ACT file in this folder. On the 'Volume Information' window you can see which .ACT file (if any) belongs to a volume.

Note that there is a one-to-one relationship between a volume and its associated .ACT file ; therefore you shouldn't rename or delete .ACT files yourself, because then WizCat loses track and instead of the contents of an archive file will show you the message 'Can't find file Fxxxxxxx.ACT'.

If you request WizCat to show the contents of a particular archive file, WizCat locates the .ACT file that's associated with the volume that contains the archive file and extracts the requested information from it.

So, to activate the cataloging of archive contents you must do 2 things :

1. Create the folder where WizCat can store its .ACT files.

As a default, WizCat uses folder C:\WIZCAT\ARCHIVES.

If you want to use another folder you must specify its full name on the Configure window (option 'Archive Folder'), e.g. 'D:\USERDATA\' or 'C:\WIZCAT\'

2. Turn on the 'Catalog Archive Contents' option on either the Configure window or the Catalog Disk window.

If an error (CRC check, I/O error or whatever) occurs while scanning an archive file then WizCat aborts processing the current archive and proceeds with the next one.



Cataloging CD-ROM disks

If you have a CD-ROM drive and the appropriate device-drivers installed on your system you can let WizCat also catalog the contents of your CD-ROM disks. This isn't any different from cataloging floppy-disks ; WizCat will enable a drive-button on the Drive Select window, and all you have to do is to click this button.



Because of the large number of files contained on CD-ROMs it can take quite some time to let WizCat catalog a CD, especially if you want WizCat to catalog the contents of archive files too.

You can speedup things considerably if you use Microsoft's new SmartDrive 4.0 disk caching utility (SMARTDRV.EXE) that comes with DOS 6.2.

This new version is able to cache CD-ROM's, with quite impressive results : without SmartDrive, it took about 70 minutes to catalog the CICA 93-11 CD. With SmartDrive, it took just 15 minutes.

If that's still too long for your taste the only option is to buy a double- or quad-speed CD-player...



File Manager and Task Manager

Clicking the File Manager or Task Manager button on the Volume List window will cause WizCat to run or switch to the corresponding Windows application.

As a default, WizCat runs these programs :

Task Manager : TASKMAN.EXE
File Manager : WINFILE.EXE

If you want WizCat to execute a different program, specify its name in WIZCAT.INI like this :

[Directories]

FileMan=C:\WINDOWS\PROGRAMS\MYFILE.EXE
TaskMan=C:\WINDOWS\PROGRAMS\MYTASK.EXE



Some non-Microsoft managers (like PC-Tools' File- and Task-managers) do not support this 'switch to' trick ; instead of switching to the already active manager, they'll simply display a message like 'Filemanager already running', or simply start a second application.

Well, apparently not all software is as flexible and well-thought-of as ye ol' WizCat or my friend Bill's goodies... "-)



Catalog Backups

When you save a catalog, WizCat first renames the original catalog file to *.BCK, and then creates a new *.CAT file that contains all updates.

Please note that, according to Murphy's Law, a backup is something you'll never need unless you don't have it. So never erase the *.BCK files...

If something happens to the *.CAT file, you can simply rename the *.BCK file to *.CAT and continue using that catalog.



Contents of WizCat ARJ/ZIP archive

File WIZCAT42.ARJ or .ZIP contains these files :

INSTALL.EXE	WizCat/PRO installation program
INSTALL.BIN	Archive containing WizCat/PRO and utility programs (see below)
FILE_ID.DIZ	Short description of WizCat's features

These files will be installed by the installation program :

WIZCAT.EXE	The WizCat program
WIZCAT.HLP	WizCat Help file
WIZCATBT.DLL	Graphic routines DLL , needed by WizCat and its utility programs
WIZCATAR.DLL	WizCat's Archive Scan routines
WIZCATIC.DLL	Icon Library, contains icons for use on the Volume List window
CTL3DV2.DLL(1)	Link library required for WizCat's 3D look
Utilities :	
WOODLE.EXE	WOODLE - WizCat Object Oriented Disk Label Editor
WOODLE.CFG	WOODLE's layout definitions file, used to save the layouts you define
WIZCATUZ.EXE	WizCat/UnZIP - unpacks ARJ and ZIP files
WIZCATUZ.WAV	Soundfile used by WIZCATUZ
WIZCATMC.EXE	WizCat/MC - utility to search for files in multiple catalogs
WIZCATDZ.EXE	WizCat/DIZ - extracts FILE_ID.DIZ descriptions from ARJ and ZIP archives
Additional info :	
SAMPLE.CAT	A sample catalog
ORDERFRM.DOC	How to order your WizCat/PRO license
ORDERFRM.WRI	The orderform in Windows Write format
README.DOC	For turbo-installers who never read help files
VENDOR.DOC	Information for disk vendors and shareware distributors, who wish to distribute WizCat.PRO (see also the Vendor Information section in this help file).

(1) Copyright Microsoft



Virus Protection

Both the WIZCAT and WOODLE programs perform a selftest each time you run them ; they will warn you if the program has been infected by a virus (be it of electronic or human nature) or otherwise damaged by displaying a message and ceasing execution. If this happens, reinstall the original, unmodified WizCat/PRO and WOODLE programs from the WIZCAT42.ZIP or WIZCAT42.ARJ distribution-package.



WIZCAT.INI

The WIZCAT.INI file (in the \WINDOWS folder) looks like this :

[Directories]

* Programs to run when clicking the File- or Task-manager button

FileMan=WINFILE.EXE

TaskMan=TASKMAN.EXE

* Editor to be used by WizCat

Editor=c:\windows\notepad.exe

* Directories

Archive_Directory=c:\WizCat\archives\

Restore_Directory=c:\

Catalog_Directory=c:\WizCat

[Options]

Date_Format=DDMMYY

Use_4DOS=YES

Rep_4DOS=NO

Confirm_Recatalog=YES

Scan_Archives=YES

Update_Label=NO

Auto_Save=NO

Disp_VollInfo=YES

Hide_Toolbar=NO

[VL_Display]

* position, color and font information for the Volume List window

[FL_Display]

* position, color and font information for the File List window

[AL_Display]

* position, color and font information for the Archivefile List window

[DL_Display]

* position, color and font information for the Folder List window

[Catalogs]

* These catalogs appear on the 'Catalog' menu

Catalog_1=

:

Catalog_9=

[Classes]

* Function-classes used by View Files

Class_1=

Class_2=

:

Class_9=

[Applications]

* Applications defined on Work with File window

App_1=c:\windows\notepad.exe

App_2=c:\windows\pbrush.exe

:

App_12=



About Archive Files

Archives are files that contain other files. Typically, the files in an archive are compressed. Archives usually have filenames ending with ZIP, ARJ etc., depending on the program they were created with.

Archives make it easy to group files, make transporting and copying these files easier, and (because the files are compressed) take up less space on your disks.

WizCat can determine and catalog which files there are in these archives : ARJ and ZIP (currently the most commonly used archive formats) and LZH, PAK, ARC and ZOO (less frequently used formats).

In order to create and extract archives, you need the appropriate DOS utility programs :

ARJ : ARJ.EXE (by Robert Jung)
ZIP : PKZIP.EXE and PKUNZIP.EXE (by PKWARE, Inc.)
LZH : LHA.EXE (by Haruyasu Yoshizaki)
ARC : ARC.EXE (by System Enhancement Associates)
ZOO : ZOO.EXE

Note : WizCat uses its own routines to determine the contents of these archives ; it doesn't need the DOS utility programs to do so.

There are also several Windows programs available that either process archives themselves, or that serve as a 'front end' for (i.e. make use of) the DOS utilities :

[WinZip by Nico Mak Computing, Inc.](#)

WinZip can create and extract archives of almost any kind.

For handling ZIP files it uses its own routines ; to handle the other archive formats it needs the appropriate DOS utilities.

[Windows UnArchive \(WUNA\) by James N. Hughes](#)

WUNA can extract ARJ and ZIP archives. It uses its own routines to do so, so it doesn't make use of the DOS utilities ARJ.EXE and PKUNZIP.EXE

You can download these ShareWare programs from most Bulletin Board Systems.

Note : these programs are not free software. As with all ShareWare, if you use these programs you should register them with the appropriate author.



Automatically Opening a Catalog

Normally, after you've started WizCat ,you must open a catalog by clicking the Catalog menu, and then selecting either the 'Open Catalog...' option, or selecting one of the catalognames at the bottom of this menu.

There are two ways to make WizCat open a catalog immediately upon startup :

The first way is to define filename-extension CAT to the Windows FileManager application and to associate WIZCAT.EXE with that extension.

Then, when you double-click a file named *.CAT on the FileManagers' display, WizCat will start and open the selected catalog immediately.

Use the 'Associate...' option from the Filemanagers' File menu to define the CAT association.

The second way to make WizCat open a catalog immediately when starting it, is to include the name of the catalog to open on the Program Managers' Program Item Properties window like this :

if catalog WINDOWS.CAT resides in the same folder as WIZCAT.EXE :

```
Commandline : C:\WIZCAT\WIZCAT.EXE WINDOWS.CAT
```

if catalog WINDOWS.CAT resides in another folder :

```
Commandline : C:\WIZCAT\WIZCAT.EXE D:\DATA\WINDOWS.CAT
```

So, if you have multiple catalogs, you can define several WizCats to the Program Manager, and let each of them use a different catalog.

Then all you have to do is to click one of the WizCat icons, and the desired catalog will be opened immediately.



WOODLE : Designing and Printing Disklabels

WizCat/PRO comes with a separate utility with which you can design and print (adhesive) labels for the disks you've cataloged : the [WizCat Object-Oriented Disk Label Editor](#) (WOODLE).

With WOODLE's [What-You-See-Is-What-You-Get editor](#) you can easily define how you want your labels to look ; the printed labels will look exactly the same as how you design them on the screen.

WOODLE can print labels for 3.5" and 5.25" disks ; you can easily customize the number of labels that WOODLE prints on each page, as well as how they should be positioned on a page ; you can also adjust the size of the labels. This enables you to use any stock of label paper.

To learn how to design and print your own labels, please read :

[General usage notes](#)

[Customizing the layout of your labels](#)

[Defining the page-layout](#)

[Printing the disklabels](#)

[The WOODLE.INP input file](#)

[Showing objects on labels](#)

[Customizing picture objects](#)

[Customizing text-objects](#)

[Avery Labels](#)



WOODLE : General usage notes

WOODLE prints your disklabels as graphics, not as plain text ; therefore your printer must support printing bitmap graphics in order to be able to use WOODLE.

The best results will be obtained when using a high-resolution printer, capable of printing 300 Dots Per Inch (DPI) or more, for instance a HP DeskJet, HP LaserJet, Canon BubbleJet etc.

Modern matrixprinters usually are also capable of printing graphics, yet with a lower resolution (150 DPI or more), so the quality of the printed disklabels can be a bit disappointing.

Also it can take quite some time for a matrixprinter to print a page of disklabels.

With WOODLE you can create full-color labels, but of course they will be printed in color only if you have a color printer ; else they will be printed in gray-shades.

WOODLE Installation

1) put file WOODLE.EXE and file WOODLE.CFG in the C:\WIZCAT folder

2) add WOODLE.EXE to a ProgramManager's Group ; make sure to specify folder C:\WIZCAT as the working directory, because else WOODLE will not be able to find and open file WOODLE.CFG.



WOODLE : Label Objects

On each label, you can optionally put one or more of these nine **objects** :

1. the disk's volume-ID
2. the disk's contents description
3. the disk's group-ID
4. the disk's location
5. the disk's owner
6. freeform text #1
7. freeform text #2
8. bitmap graphic #1
9. bitmap graphic #2

The objects 1 through 5 are 'fixed' text-objects ; you cannot define their contents yourself : WizCat will retrieve them from the WOODLE.INP file when actually printing the labels. You can however change their appearance (like size and font) and position.

Objects 6 and 7 are 'user-definable' text-objects : you can define their appearance and contents yourself.

Objects 8 and 9 are picture-objects : you can define which BMP graphic they should show, and change their size and position.

You can select which objects to include on a label by clicking the 'Objects' menu, and (de-)selecting one or more of the listed objects. As you do this, they will (dis-)appear on the screen.

There is in fact a tenth (text-)object ; this will always be visible on the label's 'backflap', right next to the WizCat logo. You cannot change its position or size but, if you are a registered WizCat/PRO user, you can change its contents (to for instance your name and address). If you haven't registered WizCat/PRO, the text 'Unregistered Evaluation Copy' will be shown and printed on the backflap.



WOODLE : Label Properties

WOODLE allows you to create up to six different layouts.

You can select a layout by clicking the 'Label' menu option, and selecting one of the six entries displayed on the menu.

To customize the label's [background](#), select the 'Background' option on the 'Label' menu.

Size, description, border and other properties of a label can be defined on the 'Label Properties' window :

Description

The description you enter will be displayed on the 'Label' menu. You can use it to easily identify each of the six layouts you can create with WOODLE.

Label Properties

Include cover and backflap

When you check this option, WOODLE will print 70 x 70 millimeter (2.75 x 2.75 inch) labels, which you can fold over a 3.5" disk ; as a result of this the disks' volume-ID and description will show on the edge of it.

By turning off this option, the label will be adjusted in size to 70 x 53 millimeter (2.75 x 2.10 inch) ; then it only covers the front of a 3.5" disk.

Note : this option is valid only for 3.5" disks.

Put backflap on top of label

If you also select this option, the backflap will be shown above instead of below the label ; this has the same effect as turning the label (or your terminal) upside-down.

Note : this option is valid only for 3.5" disks.

Hide border

Enabling this option will cause the label to be printed without a borderline ; on the screen, the border will be displayed in red instead of black.

You probably want to enable this option when using precut labels (like Avery).

Rounded corners

Enabling this option will cause a border with rounded corners to be printed.

Label Format

3.5" diskette

Select this option to create labels for 3.5" disks. WOODLE will reset the label's size to 70x70 millimeter (2.75x2.75").

5.25" diskette

Select this option to create labels for 5.25" disks. WOODLE will reset the label's size to 125x35 millimeter (4.90x1.375").

Adjust Label Size

When using precut labels (like Avery), it can happen that WOODLE's predefined sizes do not exactly match the size of the actual labels.
In this case, you can use the Adjust Label Size option : it allows you to change width and height of a label in 0.01" increments.
See also [Avery Labels](#)



WOODLE : Customizing text-objects

You can include up to seven text-objects (selected on the 'Objects' menu) on each label. Each object can be customized : you can change its position, size and appearance, and for object #6 and #7 also its contents.

To [reposition a text-object](#), move the cursor right on top of it so it looks like a hand. Then hold down the left mousebutton and move the mouse ; you'll see a box that follows the position of the cursor.

Move the box to where you want to position the text-object and release the mousebutton ; the text-object will be drawn at its new location.

To [change the size of a text-object](#), move the mouse to either the right or bottom line of the box that's drawn around it, so the cursor looks the same like one of the 'resize' icons you see when resizing a window.

Then move the mouse while holding down its left button ; you'll see a new box that grows and shrinks while you move the mouse.

Make this box the size you want the text-object to be and release the mousebutton. The text-object will then be resized to its new dimensions.

To [change font, color, charactersize or alignment of a text-object](#), move the cursor right on top of it so it looks like a hand and click the **right** mousebutton once.

WOODLE then displays a window where you can set horizontal and vertical alignment options and, if you click the 'Font...' button, the font, color and charactersize to be used.

Note : best results will be obtained when using TrueType fonts, as these can be scaled without limitation ; standard fonts will look 'blocky' when printed.

On this window you can also [change the contents of a text-object](#) : however, this is only possible for the user-definable objects 6 and 7, and for object 10 on the backflap. You can use the backslash \ to split the text up into two or more lines.

Setting the [Border](#) option will cause a border to be printed around the selected object ; on the screen the border will be drawn as a black rectangle, instead of the red rectangle drawn around textobjects with no border.

Setting the [Rounded corners](#) option makes the object's border have rounded corners.

Setting the [Transparent](#) option will cause the object to be merged with its background. This allows you to merge picture-objects with text-objects.



WOODLE : Customizing picture-objects

You can include up to two picture-objects (selected on the 'Objects' menu) on each label. Each picture can be customized : you can change its position and size, and you can define which bitmap graphic it should display.

Changing position or size of a picture-object goes exactly the same as for text-objects : put the cursor on top of it and hold down the left mousebutton to drag it to another position, or move the cursor to its right or bottom borderline and hold down the left mousebutton to change its size.

WOODLE will stretch or shrink the picture to fit the area you defined.

To **change the contents of a picture-object**, move the cursor right on top of it so it looks like a hand and click the **right** mousebutton once.

WOODLE then displays a window where you can :

- **select a bitmap** graphic by clicking the 'Open...' button
- **edit** the currently selected bitmap by clicking the 'Edit...' button. This will run the Windows PaintBrush application.

Setting the **Border** option will cause a border to be printed around the selected object ; on the screen the border will be drawn as a black rectangle, instead of the red rectangle drawn around picture-objects with no border.

Setting the **Allow bitmap stretching** option allows you to change the size of a bitmap.

If you turn this option off, WOODLE will print the bitmap in scale 1:1 ; for instance, if you select a 150x150 pixels bitmap, it will be printed as a 1 inch square bitmap on a 150 Dots Per Inch (DPI) printer, and as a 1/2 inch square bitmap on a 300 DPI printer.

Note : WOODLE only supports black&white and 16-color bitmaps.



WOODLE : Print Disklabels

When you select the 'Print Disklabels' option on the 'Print...' menu, WOODLE will read the WOODLE.INP file created by WizCat/PRO, and commence printing the labels page by page, using the page layout as you defined it on the Define Page Layout window.

If WOODLE cannot find or open file WOODLE.INP, the Print Disklabel function will terminate with message 'Unable to open WOODLE.INP file'.

After reading file WOODLE.INP, WOODLE will switch the display to Preview mode and show each page as it is about to be printed, with a message 'WOODLE is ready to print page x of x. Do you want to print this page ?'.

Replies :

YES - WOODLE will print this page, and show you the next page to be printed.

NO - WOODLE will skip printing this page, and show you the next page to be printed

Cancel - Will terminate the Print Disklabels function.



WOODLE : Define Page Layout

Clicking the 'Define Page Layout' option on the 'Print...' menu will display a window where you can

- define the number of labels that WOODLE should print on each page
- define how the labels should be positioned on each page

You can define how many labels to print on a page by specifying :

Nr. of labels to print horizontal

The number of labels to print next to each other.

Nr. of labels to print vertical

The number of labels to print below each other.

The maximum values you can specify (these depend on the size of the individual labels, the top and left margins, the spacing between labels and the size of the page) are automatically set by WOODLE.

Every time you change one of the margin or spacing values (see below), WOODLE recalculates how many labels will fit on a page, and if necessary decreases the value you entered for <horizontal labels> or <vertical labels>.

You can see how many labels will fit on a page in the 'Current Settings' box (maximum number of labels to print H x V).

In this box you can also see what the [usable print-area](#) of the selected paper is ; note that this will always be less than the [physical](#) size of a sheet, because your printer uses its own margin mechanism. Refer to the printer manual for more information on this.

Note that you can select another paper-size using the 'Setup Printer' option on the 'Print' menu.

You can position the labels on a page by specifying :

Top Margin:

The top margin is the distance in millimeters from the top edge of the usable print-area to the top edge of the first row of labels.

Left Margin:

The left margin is the distance in millimeters from the left edge of the usable print-area to the left edge of the first column of labels.

Vertical spacing:

The vertical spacing is the spacing in millimeters between the rows of labels.

Horizontal spacing:

The horizontal spacing is the spacing in millimeters between the columns of labels.

Click the OK button to accept the defined values.

After defining the page layout, you can use the '[View page on screen](#)' or '[Print sample page](#)' options on the 'Print...' menu to see how a page of labels will be printed.



WOODLE : Avery Labels

The Avery company supplies precut labels in various formats. The ones most commonly used for 3.5" diskettes are :

#5196 : 2.75" square labels, 3 rows by 3 columns, Legal sheet
#7664 : 70 mm x 71.9 mm, 4 rows by 2 columns, A4 sheet

When using Avery's #5196 (3x3) sheets, a slight problem occurs : the labels on these sheets start at 3 mm (0.013") from the left edge of the paper, yet virtually no printer is capable of printing that close to the paper's edge... For instance, a HP-4L LaserJet uses a 6 mm (.024") left-edge margin, and there's NOTHING one can do about that (use of a screwdriver or slash-hammer not taken into account).

So, because of the printer margins, it is not possible to print 3 2.75" wide labels next to each other.

The only way to make WOODLE print 3x3 labels is to decrease the horizontal width of the labels ; instead of printing them 2.75" wide, you must print them approx. 2.55" wide.

To print labels 3 columns wide, you must do the following :

1. Select **papersize Legal 8" x 11"** using the 'Setup Printer' menu-option
2. Specify these values on the Label Properties window :

Label Format	3.5" diskette
Hor. Size	255 <-- decrease the default width from 275 to 255
Vert. Size	275
Hide Border	Yes
Include cover	Yes
Cover on top	- optional -

3. Specify these values on the Page Layout window :

Top margin	5
Left margin	0
Vertical spacing	10
Horizontal spacing	4
Nr. of labels hor.	3
Nr. of labels vert.	3



WOODLE : WOODLE.INP file

On a label you can include objects like Volume-ID, Volume Description, Group etc. When you design a label using WOODLE's editor, these objects are shown with sample text ; you cannot alter their contents.

It is when actually printing the labels that WOODLE will retrieve the text to put in these objects from file WOODLE.INP.

This file will be created for you by WizCat/PRO if you use its Print Disklabels option, so if you use WizCat /PRO you don't have to worry about this file.

It's only when you want to print disklabels without the help of WizCat/PRO that you should know more about how to create a WOODLE.INP file.

WOODLE.INP must reside in the same folder as WOODLE.EXE (else WOODLE can't find it), and is a normal ASCII text file, which you can create with an ordinary ASCII editor like NotePad.

It contains one line of information for each label that should be printed ; if this file contains 10 lines, 10 labels will be printed by WOODLE.

Each line in WOODLE.INP has this format :

Volume-ID<tab>Description<tab>Group-ID<tab>Location-ID<tab>Owner-ID

<tab> is the standard ASCII TAB character (hex 09).

The maximum length of each field is :

Volume-ID	11 characters
Description	51 characters
Group-ID	8 characters
Location-ID	8 characters
Owner-ID	8 characters

WOODLE will truncate fields that exceed the maximum length.

